

# The LSST Metrics Analysis Framework (MAF)

R. Lynne Jones<sup>a</sup>, Peter Yoachim<sup>a</sup>, Srinivasan Chandrasekharan<sup>b</sup>, Andrew J. Connolly<sup>a</sup>, Kem H. Cook<sup>c</sup>, Željko Ivezić<sup>a</sup>, K. Simon Krughoff<sup>a</sup>, Catherine Petry<sup>d</sup>, Stephen T. Ridgway<sup>b</sup>.

<sup>a</sup>University of Washington, Physics-Astronomy Bldg., 3910 15th Ave NE, Seattle, WA, USA;

<sup>b</sup>National Optical Astronomy Observatory, 950 N Cherry Ave, Tucson, USA

<sup>c</sup>Eureka Scientific, Inc., 220 Duxbury CT, San Ramon, CA, USA

<sup>d</sup>University of Arizona, 933 N Cherry Ave, Tucson, AZ, USA

## ABSTRACT

We describe the Metrics Analysis Framework (MAF), an open-source python framework developed to provide a user-friendly, customizable, easily-extensible set of tools for analyzing data sets. MAF is part of the Large Synoptic Survey Telescope (LSST) Simulations effort. Its initial goal is to provide a tool to evaluate LSST Operations Simulation (OpSim) simulated surveys to help understand the effects of telescope scheduling on survey performance, however MAF can be applied to a much wider range of datasets. The building blocks of the framework are **Metrics** (algorithms to analyze a given quantity of data), **Slicers** (subdividing the overall data set into smaller data slices as relevant for each **Metric**), and **Database** classes (to access the dataset and read data into memory). We describe how these building blocks work together, and provide an example of using MAF to evaluate different dithering strategies. We also outline how users can write their own custom **Metrics** and use these within the framework.

**Keywords:** Large Synoptic Survey Telescope, LSST, Metrics Analysis Framework, MAF, Operations Simulation, OpSim, simulation, metrics

## 1. INTRODUCTION

As LSST moves toward construction, significant effort is being invested in understanding the effect of telescope scheduling on the overall performance of the survey. The LSST Operations Simulations group is working toward this goal by producing simulated surveys created with a range of observing strategies. These simulated surveys are created by the Operations Simulator (OpSim).<sup>1–3</sup> Each survey includes a detailed model of the telescope pointing and movement capability, weather conditions, scheduled and unscheduled downtime, and a scheduler algorithm which can be programmed with different sets of requested observations. The output of each simulated survey run is a simulated pointing history for LSST, consisting of approximately 2.5 million visits for a full 10-year simulation. LSST plans currently call for each visit to consist of two 15-second back-to-back exposures. The OpSim output includes the sky coordinates and filter used for these visits, together with the observing conditions (airmass, seeing, sky brightness, limiting magnitude, etc.) of each visit, along with records of the telescope state over the 10-year simulation and information relevant to the internal state of the simulator itself. To help evaluate these simulated survey outputs, we have built the LSST Metrics Analysis Framework (MAF).

In broad overview, MAF is an open-source python software framework that provides a user-friendly, easily-extensible, easily-customizable set of tools to

- read the OpSim simulated survey data from a database,
- slice the data according to the values of single or multiple columns within the data or the spatial location of the data points,
- apply various algorithms (metrics) to each data slice, saving the results,

---

Further author information: (Send correspondence to R.L. Jones)

R.L. Jones.: E-mail: ljones@astro.washington.edu, Telephone: 1-206-543-9487

- and visualize the metric results,

while also preserving metadata about the source of the data and how the data was sliced. For visualization, MAF can automatically generate reasonable plot labels and titles, but the user maintains the ability to override these defaults and provide custom labels, titles, axes ranges, etc. Additional utilities make it easy to add new data columns ‘on the fly’ for run-time extension of existing database tables. More details on the overall design are described in Section 2.

An example of analyzing an OpSim simulated survey using MAF is described in Section 3, including a brief comparison of how a user can evaluate different potential dithering methods.

MAF is intended to be extensible, allowing users to easily write their own algorithms for metrics, which can then be plugged into the framework and used in the same manner as any of the provided metrics. Users can also write new data slicing classes if needed, as well as point the framework to any kind of database. Base classes demonstrate the APIs for each of these aspects of the framework, and documentation (including tutorials) is provided online at <http://ls.st/ziz>\*. While the primary goal of MAF is to analyze the LSST OpSim outputs, we have built the framework to be easily applicable to more general use-cases as well.

We anticipate that the most common extension of MAF will be users writing their own metric algorithms (**Metrics**), specifically to address their science concerns. A demonstration of the **Metric** API with a view towards the requirements when writing new **Metrics** is provided in Section 4.

All code for LSST MAF can be git cloned from, or browsed online at, the LSST Stash repository, <http://ls.st/pxj>.

## 2. FRAMEWORK DESIGN

The heart of the MAF framework are the **Metrics** and **Slicers**. These basic classes correspond to defining “what algorithm is being calculated with the data” (the **Metric**) and “what subset of data is being evaluated” (the **Slicer**). As some examples: if we want to analyze “the mean airmass of all visits”, the **Slicer** would simply pass all visits to a **Metric** which calculates the mean of the airmass values; if we want to analyze “the mean airmass as a function of RA/Dec”, the **Slicer** would identify visits which overlap a series of RA/Dec points and pass each of those subsets to a **Metric** which calculates the mean of those airmass values. In these two examples, the **Slicers** (defining the subset of data being evaluated at once) are different, but the **Metric** itself (what calculation is being done) is the same. Some more examples: if we want to analyze “the mean single visit limiting magnitude as a function of RA/Dec” as well as “the total number of visits as a function of RA/Dec”, we would use the same **Slicer** but different **Metrics**. These examples emphasize a fundamental point about the framework: **Metrics** and **Slicers** have been built to be modular and interchangeable.

These modules, and other modules of MAF, are described in this section.

### 2.1 The Metrics module

**Metrics** are simply algorithms to analyze a given quantity of data. MAF provides a set of **Metrics** that include a number of very simple algorithms, as well as some more complex **Metrics** focused on analyzing various aspects of the cadence of observations or the technical performance of an OpSim run. The simple **Metrics** include **MeanMetric**, **MinMetric**, **MaxMetric**, **MedianMetric**, **RmsMetric**, **RobustRmsMetric**, **FullRangeMetric**, **BinaryMetric**, **PercentileMetric**, **FracAboveMetric**, **FracBelowMetric**, **SumMetric**, and **CountMetric**. These can be applied to any column in the data, making these **Metrics** themselves flexible and easily reusable pieces of code. A few of the more complex metrics include the **CoaddM5Metric** to calculate the coadded depth of a set of visits, **ProperMotionMetric** and **ParallaxMetric** to analyze the expected precision of proper motion and parallax measurements for a given OpSim simulation, the **UniformityMetric** to analyze the difference between a given distribution of visits and a uniform distribution (using a K-S test), and **VisitGroupsMetric** to analyze how groups of visits are distributed. A full list of included **Metrics** is provided in the MAF documentation, although we anticipate that users will wish to write new **Metrics** specific to their science.

---

\*Throughout the text, shortened URL have been used. Please see Appendix A for the full URL



## 2.2 The Slicers module

The **Slicers** subdivide the larger OpSim output data into well-defined subsamples, such as ‘all visits’, ‘all visits overlapping a particular Healpixel<sup>†</sup>, RA/Dec grid point’, ‘all visits to a particular OpSim FieldID’, or ‘all visits with a particular data value within a given interval (of airmass, seeing, night, or any other column in the data)’. We can iterate through all of these subdivisions using methods defined in the **Slicer**, thus iterating through each Healpixel grid point or each OpSimFieldID or each interval. The **Slicer** defines what data is passed to a **Metric**.

MAF provides a set of **Slicers** that include:

- **UniSlicer**: returns a single data slice, containing all visits in the input data. This could also be thought of as the identity operator for slicing.
- **OneDSlicer**: returns slices of data where the value of a user-specified column is within a given interval (and iterates through a series of intervals). The user can specify the intervals defining each slice directly, specify the overall number of intervals, specify the size of each interval, or let the Slicer choose the number of intervals using the Freedman-Diaconis rule. This **Slicer**, when combined with a **CountMetric**, acts as a histogram and the intervals are defined in the same manner as numpy’s histogram function.
- **NDSlicer**: returns data slices where the values of multiple user-specified columns are within given N-dimensional interval (and iterates through a series of intervals). This is similar to the **OneDSlicer**, but in N-dimensions.
- **OpSimFieldSlicer**: returns data slices where the FieldID matches a specified FieldID (and iterates through a set of FieldIDs). This **Slicer** is most useful for technical metrics involving the performance of the OpSim simulator itself.
- **HealpixSlicer**: returns data slices where the RA/Dec of the visit overlaps (based on a user-defined radius) the RA/Dec of the HEALpix grid point (and iterates through all Healpixels at a user-defined resolution level). This **Slicer** allows calculation of metrics with resolution of field overlaps. The **HealpixSlicer** uses the HEALpix tessellation of a sphere,<sup>4</sup> making it possible for the user to set a spatial resolution and rapidly compute angular power spectra.

Each **Slicer** provides methods to iterate through all slices and the metadata about each slice (i.e., the ‘slicePoint’ definition). For example, the slicePoints for the **HealpixSlicer** are the underlying healpixels, and the slicePoint metadata then includes the pixel ID and the RA and Dec of each healpixel. Each **Slicer** therefore also provides methods to visualize the metric values generated by iterating through the **Slicer** and applying a **Metric** at each slice. The **OneDSlicer** provides methods to plot the one-dimensionally sliced metric values and the **NDSlicer** provides methods to plot the N-dimensional metric values along either one or two user-defined axes. The **OpSimFieldSlicer** and **HealpixSlicer** provide methods to generate sky maps of the metric values as well as histograms of the resulting metric values; the **HealpixSlicer** also provides a method to plot the power spectrum of the metric values.

Further under the hood, in order to do the data slicing efficiently, each **Slicer** also indexes the visit data according to the slice definitions. The best example of this is with the **HealpixSlicer**. In order to efficiently find the visits which overlap a particular Healpixel, the **Slicer** first builds a kd-tree on the visit RA and Dec values. Then for each Healpixel, it searches the kd-tree for visits within a specified radius (the radius of the LSST field of view) of the Healpixel RA and Dec value.

Although the provided **Slicers** cover a wide phase-space of potential data slicing, it is also easy for users to write new **Slicers** to create custom subdivisions of the input data or to create new visualizations of the metric values.

---

<sup>†</sup>Healpixels refer to the HEALpix (Hierarchical Equal Area isoLatitude Pixelisation) tessellation of the sphere<sup>4</sup>

## 2.3 The SliceMetric module

To couple together **Slicers** and **Metrics**, we provide the **SliceMetric** class. This class provides methods to take a single **Slicer** object and multiple **Metric** objects and then iterate through the **Slicer**, applying the multiple **Metrics** at each slicePoint. It allocates and saves the metric values as numpy masked arrays and handles masking the metric values when there is either no data at a particular slicePoint or the **Metric** returns a flagged ‘bad value’. The **SliceMetric** also provides convenience methods to plot all metric values, save all metric values to disk and read previously saved metric values back from disk. The **SliceMetric** also keeps track of the relevant metadata (e.g., which simulation is being analyzed) for each **Metric** + **Slicer** combination and adds this to the plot titles and saved files. This class is provided as a convenience for users interacting with MAF from within a python shell or from their own custom python scripts; it is also used by the MAF Driver interface, which allows users to run MAF from relatively simple configuration files.

## 2.4 The Database module

Data comes into MAF from a database via the **Database** classes. The real workhorse here is the **Table** class, which provides the tools needed to connect to a database table, execute queries on that table, and return the results of the queries in a numpy recarray. The **Table** class depends on database tools developed for another LSST software package used to generate simulated catalogs. Underlying these tools is SQLAlchemy,<sup>5</sup> thus MAF’s **Table** class is agnostic about the specific type of SQL used in the database and can connect to many different types of databases.

On top of the **Table** class, the OpSim-specific **OpsimDatabase** class carries more information about the full set of database tables in the sqlite databases generated by OpSim. **OpsimDatabase** includes methods to connect to the various tables within the sqlite database file, fetch and parse the configuration tables used to run a particular simulated survey, retrieve the number of years of operations the simulation was intended to represent, get and identify various proposal IDs, and most importantly: fetch the records representing each visit and its observing conditions, allowing the user to specify which columns to retrieve from the database and to apply a SQL constraint to the selection of visits.

## 2.5 Framework Data Flow

The basic flow through the framework to evaluate an OpSim simulated survey is then:

- Connect to an OpSim sqlite database file (provided by the OpSim team) using an **OpsimDatabase** object.
- Instantiate the **Metrics** objects to be used to evaluate the simulated survey. This sets up a registry containing the columns needed from the OpSim outputs (such as airmass and seeing, etc.).
- Instantiate the **Slicer** to be used with these **Metrics**, which may add some additional columns needed from the OpSim output (such as RA and Dec).
- Cross-reference the necessary columns for the **Slicer** and **Metrics** against a MAF utility which provides definitions for the source of each column. Columns coming directly from the OpSim outputs are indicated as coming from the database. However this utility also provides a way to generate new columns ‘on the fly’ by calculating values for each visit using methods (called **Stackers**) which can be added to the framework.
- Retrieve the necessary data columns from the OpSim output using **OpsimDatabase**, limited by a user-defined SQL constraint if desired. This data is then stored as a numpy recarray in memory.
- Use the methods defined by the **Stackers** to generate the on the fly columns and add into the numpy recarray.
- Set up the **Slicer** to be ready for slicing, indexing the necessary information from the visit data.
- Instantiate a **SliceMetric** object to make it easy to couple the **Metrics** and **Slicer**, and add the **Metrics** and **Slicer** to the **SliceMetric**.

- Use the `SliceMetric` to iterate over the `Slicer` and apply all the `Metrics` at each slice, calculating all of the desired metric values.
- Use the `SliceMetric` to save the metric values to disk, along with relevant metadata.
- Use the `SliceMetric` to generate all plots for all metric value and save these to disk.
- Calculate any user-specified summary statistics: these are just `Metrics` which are applied to the metric values instead of the visit data. A typical usage would be to calculate the mean and RMS of metric values calculated at all points over the sky using a `HealpixSlicer`.

This can then be repeated for different `Slicers` and different SQL constraints as desired. An illustration is provided in Figure 1.

There is some subtlety to determining the boundary between the `Slicer` and the SQL constraint. As a simplified example, if we want to calculate the number of visits for each year of the survey, we could apply a series of SQL constraints limiting the retrieval of data from the database to visits falling within each year, and then use a `UniSlicer` with a `CountMetric` to simply count how many visits were in each year. The results would all be single, separate numbers. We could also apply no SQL constraint, select visits from all years, then use a `OneDSlicer` set up with slice sizes of a year, together with a `CountMetric`. The result would then be the same set of values, but linked by the `Slicer` and easily plotted as a function of year. The `Slicer` and a series of SQL constraints act similarly, but the `Slicer` allows us to keep better track of the relationship between each slice. Thus, in general, when using MAF, use SQL constraints for large subdivisions (e.g., observations in a single filter), especially if only a single subsection of the visits is desired, and use `Slicers` if a series of subdivisions (and a sense of their relationship) is desired (e.g., how a `Metric` value changes over space or time).

## 2.6 The Driver module

The MAF `Driver` provides a simple way to go through this entire flow automatically. When using the `Driver`, the user specifies the database address, the output directory, the desired `Metrics`, the desired `Slicers` to go with these sets of `Metrics`, and the desired SQL constraints to apply. The `Driver` uses these specifications to run through the steps listed above, looping through the unique SQL constraints and different `Slicers`. It also saves the configuration used to run MAF, to make it easy to recreate the analysis.

The MAF `Driver` takes as input a single configuration file, which is itself a python script, making it easy to configure and combine large numbers of `Metrics`, `Slicers`, and SQL constraints. Thus, MAF can generate detailed reports on each OpSim simulated survey.

## 3. MAF APPLICATIONS

This section demonstrates the application of MAF to a particular OpSim run, ‘OpSim3.61’. While we can only show a few `Metrics` and `Slicers` here, we have attempted to illustrate the power and range of MAF in these choices, as well as the flexibility in the configuration scripts for the `Driver`.

### 3.1 A simple analysis using the UniSlicer

We start with a very simple analysis: calculating the mean and RMS of the seeing distribution for visits which were taken in  $r$  band, and then also in  $i$  band. To find the mean seeing for all visits in  $r$  band, we use a SQL constraint to select  $r$  bands from the OpSim output database, then use a `UniSlicer` to sub-select all visits in the dataSlice, and then use a `MeanMetric` applied to the ‘seeing’ column. To find the RMS of the seeing in  $r$  band, it is similar but using an `RmsMetric` instead. In order to calculate the equivalent values in  $i$  band, we do the same but use a SQL constraint where we select  $i$  band visits instead. Note that MAF would do two queries of the database (not four), one for visits in  $r$  band and one for visits in  $i$  band.

With this translation into MAF `Metrics` and `Slicers`, it is then fairly simple to write a configuration file for the `Driver` to generate this output. We can loop over the two filters desired, and configure the `Metrics` (`MeanMetric` and `RmsMetric`), configure the `Slicer` (linking the `Metrics` to the `Slicer`), and send this information back from our configuration script into the `Driver` script itself. A full example driver configuration file

```

configList = []
filters = ['r', 'i']
for f in filters:
    # Configure a metric that will calculate the mean of the seeing
    # Adding the 'IdentityMetric' to the summaryStats means it will print the output to a file.
    m1 = configureMetric('MeanMetric', params=['seeing'], summaryStats={'IdentityMetric':{}})
    # Configure a metric that will calculate the rms of the seeing
    m2 = configureMetric('RmsMetric', params=['seeing'], summaryStats={'IdentityMetric':{}})
    # Combine these metrics with the UniSlicer and a SQL constraint based on the filter, so
    # that we will now calculate the mean and rms of the seeing for all r band visits
    # (and then the mean and rms of the seeing for all i band visits).
    slicer = configureSlicer('UniSlicer', metricDict=makeDict(m1, m2),
                           constraints=['filter = "%s"' % (f)])
    # Add this configured slicer (carrying the metric information and the sql constraint) into a list.
    configList.append(slicer)

```

Figure 2: These are the only lines needed in a driver configuration file to calculate the mean and rms of the seeing in all visits in  $r$  and  $i$ , respectively. One for each **Metric**, one for the **Slicer**, and then a few others to loop over the different filters. Comments in-line above provide additional description.

that recreates all the plots in this section is available at <http://ls.st/mx1>. However, the relevant lines that set up and configure these **Metrics** and **Slicer** (including looping over the two filters) are shown in Figure 2. We find that for OpSim3.61 the results are:

- Mean seeing in  $r$  band: 0.81", RMS of seeing in  $r$  band: 0.21"
- Mean seeing in  $i$  band: 0.79", RMS of seeing in  $i$  band: 0.20".

Of course, this analysis is very simple and could easily be done in any number of ways, including using functions defined in the database itself. The interesting aspect is that it is very easy to write new **Metrics** (see Section 4) and that the database was only scanned twice to get the data to calculate these numbers.

### 3.2 Analysis including visualization: OneDSlicer and HealpixSlicer

Moving to a slightly more complicated analysis that includes visualization, we generate and plot a histogram of the airmass values in  $r$  and  $i$  bands visits. Translating this to MAF **Slicers** and **Metrics**, we would again use a SQL constraint to first select visits in  $r$  and  $i$  band. Then we would use a **OneDSlicer** to slice on the values of the airmass column (in each band), together with a **CountMetric** to return the number of visits in each slice, to generate the histograms. It is worth noting that since these SQL constraints also match the ones in the **UniSlicer** example above (e.g., ‘where filter = “r”’ and ‘where filter = “i”’), we will still only do two queries of the database when combining this analysis with the **UniSlicer** calculations. That is, for each SQL constraint in the driver configuration file, the **Driver** evaluates what columns are needed for all the **Slicers** and **Metrics** being run with the same constraint, and retrieves all of these columns in one query. The **Driver** has hooks when configuring each **Metric** to allow the user to customize each plot: set the title, x and y labels, x and y ranges, and colors. It also provides the option to combine the outputs from multiple **OneDSlicers** (such as we have done here) into one plot. The resulting combined plot is shown in Figure 3, and the additional configuration parameters for the driver configuration file are shown in Figure 4.

Next, let us evaluate the number of visits and the coadded limiting magnitude over the sky, this time in  $g$  band, and do this at a resolution sufficient to resolve overlaps between LSST fields of view. At the time of this publication, the LSST OpSim uses fixed field pointings<sup>‡</sup>, returning to the same RA and Dec for each field every time – however, these fields do overlap slightly, on the order of 100 arcminutes. By using the **HealpixSlicer**, with a value of NSIDE of at least 64, we can begin to resolve the field overlaps. Coupling this with a **CountMetric**, we can evaluate the number of visits to each RA and Dec point in the HEALpix grid. We can also calculate the

<sup>‡</sup>In the future, the OpSim will likely adopt a dithering pattern of some kind, which will be based on evaluations of various dither patterns by the LSST community.

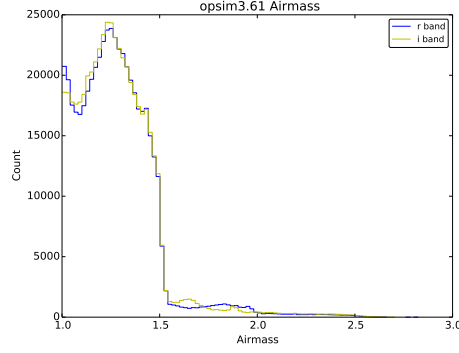


Figure 3: Example of using a `OneDSlicer` together with a `CountMetric` to generate a histogram of the airmass distribution in r and i bands, and merging the result using the driver configuration file.

```
configList = []
filters = ('g', 'r')
for f in filters:
    # Configure a metric + a OneDSlicer so that we can count how many visits
    # are within in each interval of the seeing value in the OneDSlicer.
    m1 = configureMetric('CountMetric', params=['Airmass'], kwargs={'metricName':'Airmass'},
                        # Set up a additional histogram so that the outputs of these count metrics in each
                        # filter get combined into a single plot (with both r and i band).
                        histMerge = {'histNum':1, 'legendloc':'upper right', 'label':'%s band' %(f),
                                    'xlabel':'Airmass', 'color':colors[f]})
    # Set up the OneDSlicer, including setting the interval size for slicing.
    slicer = configureSlicer('OneDSlicer', kwargs={'sliceColName':'Airmass', 'slicesize':0.02},
                            metricDict=makeDict(m1), constraints=['filter = "%s"' %(f)])
    configList.append(slicer)
```

Figure 4: These configuration lines let us loop over several filters, and create a histogram of the airmass distribution in each filter. The ‘histMerge’ line tells the driver to merge the histograms into a single plot, which is shown in Figure 3.

coadded depth at each point in the HEALpix grid using the provided `Coaddm5Metric`, which uses the individual visit 5-sigma limiting magnitude output by OpSim and combines them according to

$$\text{Coadd m5} = 1.25 \log_{10} \sum (10^{0.8 m_{5i}}). \quad (1)$$

The resulting metric values will be two arrays, containing the number of visits and the coadded m5 values evaluated at the RA/Dec point defining each healpixel. The `HealpixSlicer` then provides the following methods to visualize these metric values: a `SkyMap` (see Figures 5a and 5b for examples), a `Histogram`, where the area of each healpixel is used to convert the histogram counts into area on the sky (see Figures 5c and 5d), and a `Power Spectrum` (see Figures 5e and 5f). The `HealpixSlicer` uses `healpy`’s `anafast` function to calculate the angular power spectrum and plots the result, optionally removing the spherical harmonic dipole.

### 3.3 Adding summary statistics

We can also calculate ‘summary statistics’ on any calculated metric value. Summary statistics are intended to take metric values calculated across the sky or over many intervals and extract a scalar value as a ‘summary’. Any `Metric` can be used to calculate a summary statistic, as long as it only requires a single column of data (the metric values). We previously calculated the number of visits and coadded depth at each HEALpix in *g* band. In order to more easily compare many different OpSim simulated surveys, we would want to know the mean and rms of the distribution of these values across the sky. We can easily do that via the `Driver`, by simply adding these lines to the `Metric` configuration, as shown in Figure 6. For this simulation, the mean of the *g* band number of visits was 93.8 and the mean of the coadded depth was 26.9, while the `RobustRMS` (RMS approximated by interquartile range to reject outliers) was 20.8 visits and 0.21 mags, respectively.

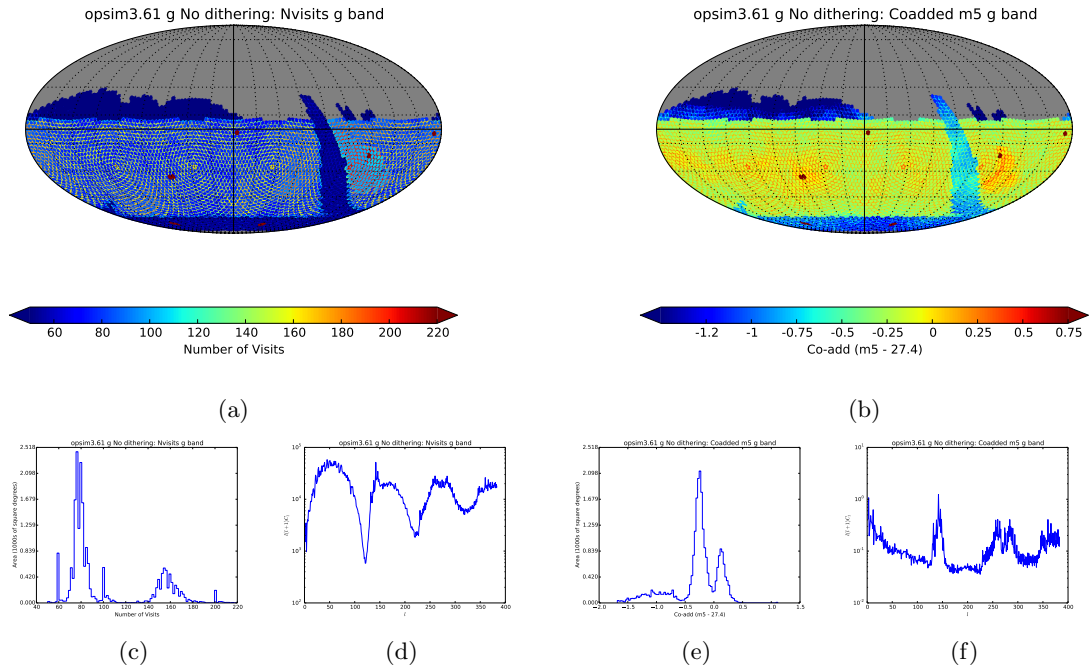


Figure 5: Example of the plots resulting from using the `HealpixSlicer` to calculate the number of visits per healpixel and the coadded limiting magnitude per healpixel. Panels 5a and 5b show the skymap of the number of visits and coadded depth (respectively) in *g* band. Panels 5c and 5d show the additional visualizations available from the `HealpixSlicer`: a histogram of the area corresponding to a particular number of visits, and the angular power spectrum of the number of visits across the sky. Panels 5e and 5f show these additional plots for the coadded limiting magnitude `Metric`.

```
# Configure Coadded depth metric, specifying m5 column
# and 'metricName' (which is placed at top of plots)
m2 = makeMetricConfig('Coaddm5Metric', kwargs={'m5col':'5sigma_modified',
                                                'metricName':'Coadded m5 g band'},
                    # Specify some options for plotting - zp removes a zeropoint from plotted values
                    plotDict={'zp':mag_zpoint,
                              'plotMin':-1.5, 'plotMax':0.75,
                              'units':'Co-add (m5 - %.1f)'%mag_zpoint},
                    # Calculate summary statistics "mean" and "rms"
                    summaryStats={'MeanMetric':{}, 'RobustRms':{}})
```

Figure 6: Example of configuring a `Metric` where specific plotting options are desired (in particular, here a zeropoint is subtracted from all metric values before plotting; a normalization value is also supported), and a mean and robust rms summary statistics are specified.

### 3.4 Evaluating dithering strategies: Adding columns on the fly

Thus far we have demonstrated how to evaluate properties of all visits (or a subset selected by a SQL constraint) using the **UniSlicer**, how to evaluate properties of visits defined by a series of intervals using the **OneDSlicer**, and how to evaluate properties of visits at all points across the sky (resolving field overlaps) using the **HealpixSlicer**, as well as how to summarize the results of these evaluations into a single scalar number using summary statistics. We showed how this can be done simply using the **MAF Driver**. Next, let’s consider a more complicated analysis that includes the MAF utility to generate data columns ‘on the fly’ in order to evaluate some dithering strategies.

As mentioned above, the existing OpSim simulated surveys use a fixed tessellation of the sky when scheduling visits. In the current OpSim simulated survey outputs, the ‘fieldRA’ and ‘fieldDec’ columns refer to these fixed field centers. The OpSim database outputs also provide an example of a dithering strategy, referred to as ‘hexdither’. The hexdither strategy offsets all the original fieldRA and fieldDec values in a night by a consistent amount in RA and Dec; the size of the offset is defined by a series of vertices, packed in a triangular pattern into a hexagon inscribed in LSST field of view. The resulting RA and Dec values are recorded in the ‘hexdithra’ and ‘hexdithdec’ columns in the OpSim outputs. Figure 7 illustrates the pattern of the hexdither vertices within the LSST field of view; when all 217 vertices have been visited, the pattern repeats again from the beginning. Evaluating other potential dithering strategies is straightforward with MAF.

When using the **HealpixSlicer**, each data slice consists of visits overlapping the HEALpix RA/Dec point. Determining the relevant visits is based on the visit ‘fieldRA’ and ‘fieldDec’ by default; however, the **HealpixSlicer** can also be configured to use other columns – such as the ‘hexdithra’ and ‘hexdithdec’ columns. Thus, it is extremely easy to run a set of **Metrics** on the original, non-dithered field pointings and then run the same set of **Metrics** using a **HealpixSlicer** configured to use the hexdithered pointings. The same is true of any RA/Dec-like columns which are added straight into the OpSim database file. However, MAF also provides users the capability of adding new columns to the OpSim visit data after the data has been queried from the database. We can use this to evaluate dithering strategies without altering the OpSim database, instead simply writing a small amount of additional python code – a new MAF **Stacker** class. An example **Stacker** written to add a random RA and Dec dither to each pointing is shown in Figure 8. The framework then handles identifying which data columns come from **Stackers** and generating the required data at runtime. Using these new columns is simple and in the driver configuration file there is no differentiation between columns retrieved directly from the database or columns generated by **Stackers** – the name of the column desired for ‘spatialkey1’ and ‘spatialkey2’ is simply entered into the configureSlicer kwargs in the driver config. This can be seen in the full driver configuration file at <http://ls.st/mxl>.

Previously we evaluated the number of visits and coadded depth in *g* band, using a **HealpixSlicer**. We can now repeat this evaluation, but apply each of these different dithering strategies as well. The results are shown in Figure 9. As can be seen, the peaks in the number of visits and coadded depth due to field overlaps are dramatically smoothed by both the hexdither and random dither strategies. We can also generate histograms showing the area achieving a given number of visits and the area achieving a given coadded depth (see Panels 9g and 9h), which show that the double peaks in coadded depth corresponding to field centers vs. field overlaps are smoothed into a single peak. Similarly, we can create plots to compare the power spectra; Panel 9i shows the dramatic difference that dithering makes. In the non-dithered case, the peaks in the power spectra of the coadded depth can print through to galaxy number counts, causing problems for large scale structure cosmological analysis.<sup>6</sup>

To continue this evaluation of dithering strategies a little further, let us add a few additional **Metrics**. While there are endless possibilities, for reasons of space here we will consider only the **ProperMotion Metric** and the **QuickRevisit Metric**. The **ProperMotionMetric** calculates the expected final precision in the proper motion measurement at a given RA/Dec, based on the astrometric uncertainties in each observation (estimated from the user-specified star’s magnitude plus the 5-sigma limiting magnitude of each visit, including an error floor) and the times of the observations (visits spread further apart in time will have a lower error in the proper motion), and assuming no parallax. The **QuickRevisitMetric** simply counts the number of nights that have more than a user-defined number of visits, a relevant statistic for studies of variables and transients with short timescales and to solar system object detection (although it is definitely not a comprehensive evaluation). The

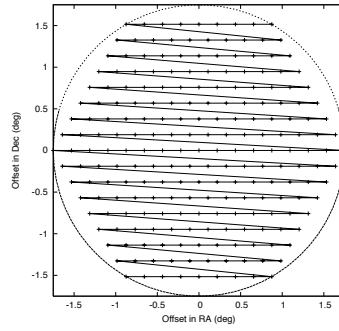


Figure 7: The hexdither dithering strategy offsets the fixed OpSim field centers by a given amount each night. The offset corresponds to the vertexes of a triangular tessellation of the hexagon inscribed in the LSST field of view. The solid line shows the progression through the vertices by night, from the lower left to the upper right. The offsets repeat after the entire pattern is completed.

```
class RandomDitherStacker(BaseStacker):
    """Randomly dither the RA and Dec pointings up to maxDither degrees from center."""
    def __init__(self, raCol='fieldRA', decCol='fieldDec', maxDither=1.8, randomSeed=None):
        # Instantiate the RandomDither object and set internal
        variables.
        self.raCol = raCol
        self.decCol = decCol
        self.maxDither = maxDither * np.pi / 180.0
        self.randomSeed = randomSeed
        # self.units used for plot labels.
        self.units = 'rad'
        # Values required for framework operation: this specifies the
        names of the new columns.
        self.colsAdded = ['randomRADither', 'randomDecDither']
        # Values required for framework operation: this specifies the
        data columns required from the database.
        self.colsReq = [self.raCol, self.decCol]

    def run(self, simData):
        # Generate random numbers for dither, using defined seed value
        if desired.
            if self.randomSeed is not None:
                np.random.seed(self.randomSeed)
                dithersRA = np.random.rand(len(simData[self.raCol]))
                dithersDec = np.random.rand(len(simData[self.decCol]))
                # np.random.rand returns numbers in [0, 1) interval.
                # Scale to desired +/- maxDither range.
                dithersRA = dithersRA*np.cos(simData[self.decCol])*2.0*self.maxDither - self.maxDither
                dithersDec = dithersDec*2.0*self.maxDither - self.maxDither
                # Add to RA and wrap back into expected range.
                randomRADither = simData[self.raCol] + dithersRA
                randomRADither = randomRADither % (2.0*np.pi)
                # Add to Dec and wrap back into expected range.
                randomDecDither = simData[self.decCol] + dithersDec
                randomDecDither = np.where(randomDecDither < -np.pi/2.0, -1.*(np.pi+randomDecDither), randomDecDither)
                randomDecDither = np.where(randomDecDither > np.pi/2.0, (np.pi-randomDecDither), randomDecDither)
                self.stackerCols = np.core.records.fromarrays([randomRADither, randomDecDither],
                                                                names=['randomRADither', 'randomDecDither'])
                # Add the new columns into the opsim simulated survey data.
                simData = self._opsimStack(simData)
            return simData
```

Figure 8: Example Stacker written to add a random RA and Dec dither to each visit pointing. The MAF Driver uses these Stacker classes to generate the additional columns at runtime, if the new columns are used in the driver configuration script. A HealpixSlicer can be easily configured to use these new dithering columns generated on the fly within MAF by just referring to their names in the driver configuration file.

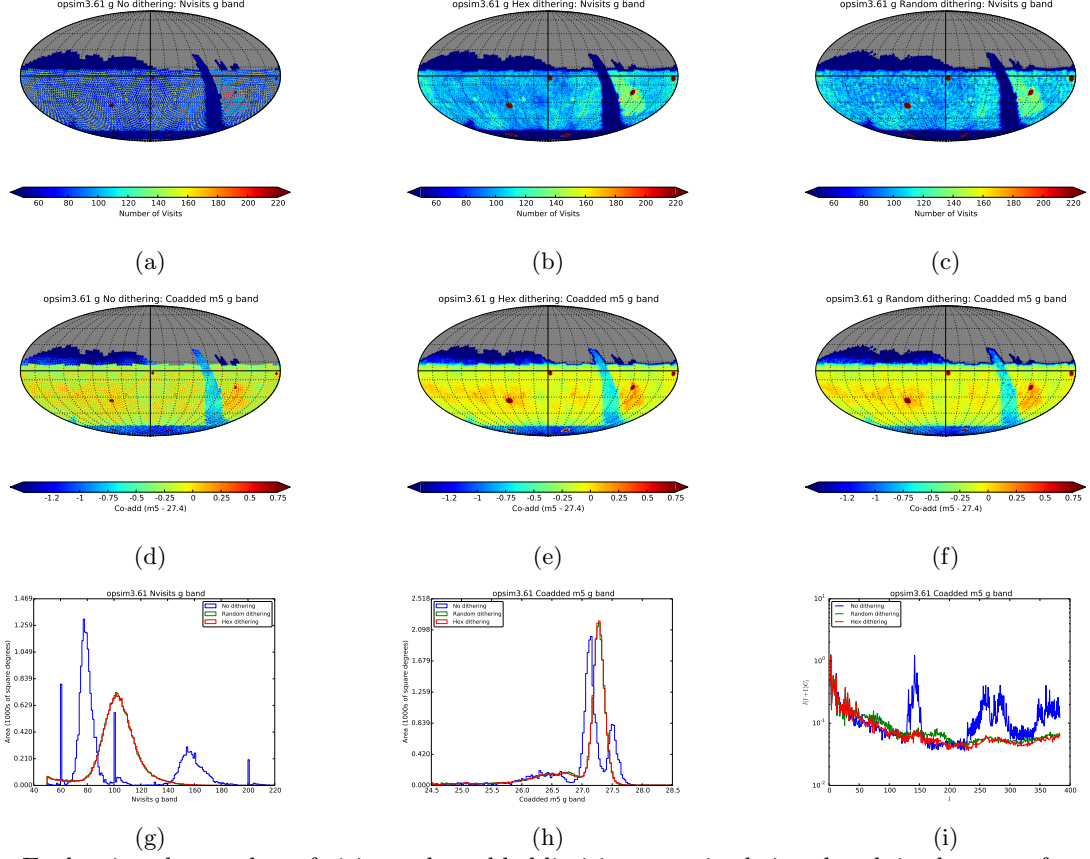


Figure 9: Evaluating the number of visits and coadded limiting magnitude in  $g$  band, in the case of no dithering (Panels 9a and 9d), hex dithering (Panels 9b and 9e) and random dithering (Panels 9c and 9f) applied to the OpSim FieldRA and FieldDec values. In the no dither and hex dither case, the relevant RA/Dec columns are provided by the OpSim database; the random dither RA/Dec columns were generated on the fly using a **Stacker**. Panels 9g, 9h and 9i show the histogram and power spectrum plots created from these metric values. The areas with fewer visits (in the plane of the Milky Way, near the south celestial pole, and north of  $\approx 10^\circ$ ) are areas outside the main footprint of LSST and are observed with a different set of requirements, including fewer visits. The six dark red circular areas visible in the number of visits and coadded depth plots represent the deep drilling fields, and are again observed with a different set of requirements than the main survey. Examining panels 9i, we see that dithering is extremely important for smoothing the peaks in the power spectrum of the coadded depth, which can print through to cosmological analysis such as galaxy clustering. It is also important for the coadded depth; although the mean value of the coadded limiting magnitude does not change significantly (26.98/26.99/26.98 in no dither/hex dither/random dither, respectively) the median does increase from 27.13 without dithering to 27.23 in both dithering options. (See Table 1).

**QuickRevisitMetric** is just intended to be a simple way to start looking at the effect of dithering on short time-scale revisits (as this dithering can affect the field overlap region, which can act as a source for significant numbers of quick revisits). We ran the **ProperMotionMetric** with stars at 20th and 24th magnitude (to evaluate high and low SNR regimes), and looked for nights with more than 10 visits with the **QuickRevisitMetric**. Figure 10 shows the results with each of the different dithering strategies – no dithering, hex dithering, and random dithering. At 20th magnitude, the **ProperMotionMetric** shows very little difference between any of these observing strategies, but once we reach 24th magnitude, it is apparent that dithering smoothes the accuracy of the proper motion measurements across the sky in a similar fashion to how dithering smoothed the number of visits and coadded depth in *g* band, above. However, it is only when we start to consider the **QuickRevisitMetric** that the differences between the hexdither and random dither start to become apparent. Looking at Panels 10g, 10h, 10i, and particularly 10l, we can see that in the case of no dithering, a small area of the sky receives a large number of nights with more than 10 visits per night. These large numbers of revisits are due to both the Deep Drilling observations and the field overlaps. However, with no dithering at all, most of the sky receives much fewer than 5 nights with 10 or more visits within any night. Meanwhile, random dithering (where each visit is independently and randomly dithered) spreads visits around the sky, so no significant portion of sky has more than 20 nights with more than 10 visits – but the average patch of sky receives a larger number of nights with 10 or more revisits; i.e., the median number of nights with at least 10 revisits is higher than with no dithering. Hexdither, on the other hand, because it keeps a constant offset from the original fixed field pointings for an entire night (thus preserving field overlaps within a night, while still smoothing the location of the overlaps from one night to the next), has an even higher median number of nights with 10 or more revisits. This is reflected in the summary statistics for this **Metric**, see Table 1.

By creating **Metrics** tied closely to science goals, we can use MAF to analyze the effects of different dithering strategies in detail as above. We can also use MAF to analyze multiple OpSim simulated surveys created with different simulation parameters such as: varying the exposure time, obtaining visits in pairs (or singletons or triples), changing the footprint of the survey, varying the airmass, seeing or skybrightness limits for obtaining observations, or otherwise changing the cadence goals. This can be done simply by changing the name of the database in the driver configuration file (also settable via the command line). In this way, MAF can be used to evaluate different observing strategies.

## 4. WRITING A NEW METRIC

We anticipate that many users will want to write their own **Metrics**. The **Metric** class API is minimal to help accommodate this. A base class provides the framework overhead, such as creating a column registry (so that the framework can determine what columns to fetch from the database) and determining units for each column if not provided by the user (so that plots can be properly labeled). This leaves the user free to concentrate on the code relevant to their particular analysis.

Each **Metric** must have `__init__` and `run` methods. The `run` method is given only the data slice and the `slicePoint` metadata<sup>§</sup>, applies the algorithm to calculate the metric value, and returns only that metric value for that data slice. For the simplest metrics, operating on a single column and returning a scalar value for each data slice, the user only needs to write the `run` method. An example of a simple **Metric**, providing only a new `run` method is shown in Figure 11. Simple Metrics like these inherit from **SimpleScalarMetric**, which is a subclass of the **BaseMetric** that provides some additional error checking about column names and returned data types.

By also extending the **SimpleScalarMetric**’s `__init__` method using Python’s *super*, users can provide configurable parameters to each metric at run time or add their own column definitions. An example is the **PercentileMetric** shown in Figure 12.

More complicated **Metrics**, such as those operating on more than one column or returning a complex data type (such as a dictionary or an array), inherit directly from the **BaseMetric**. In addition, those returning a complex data type can add ‘reduce’ methods, intended to take that complex data value and turn it into a scalar for each slice. This is especially useful for **Metrics** where a computationally expensive value must be computed

---

<sup>§</sup>Many **Metrics** will not use the `slicePoint` metadata, but since the **Driver** uses **Metrics** interchangeably, the arguments passed to the `run` method are the same for all **Metrics**.

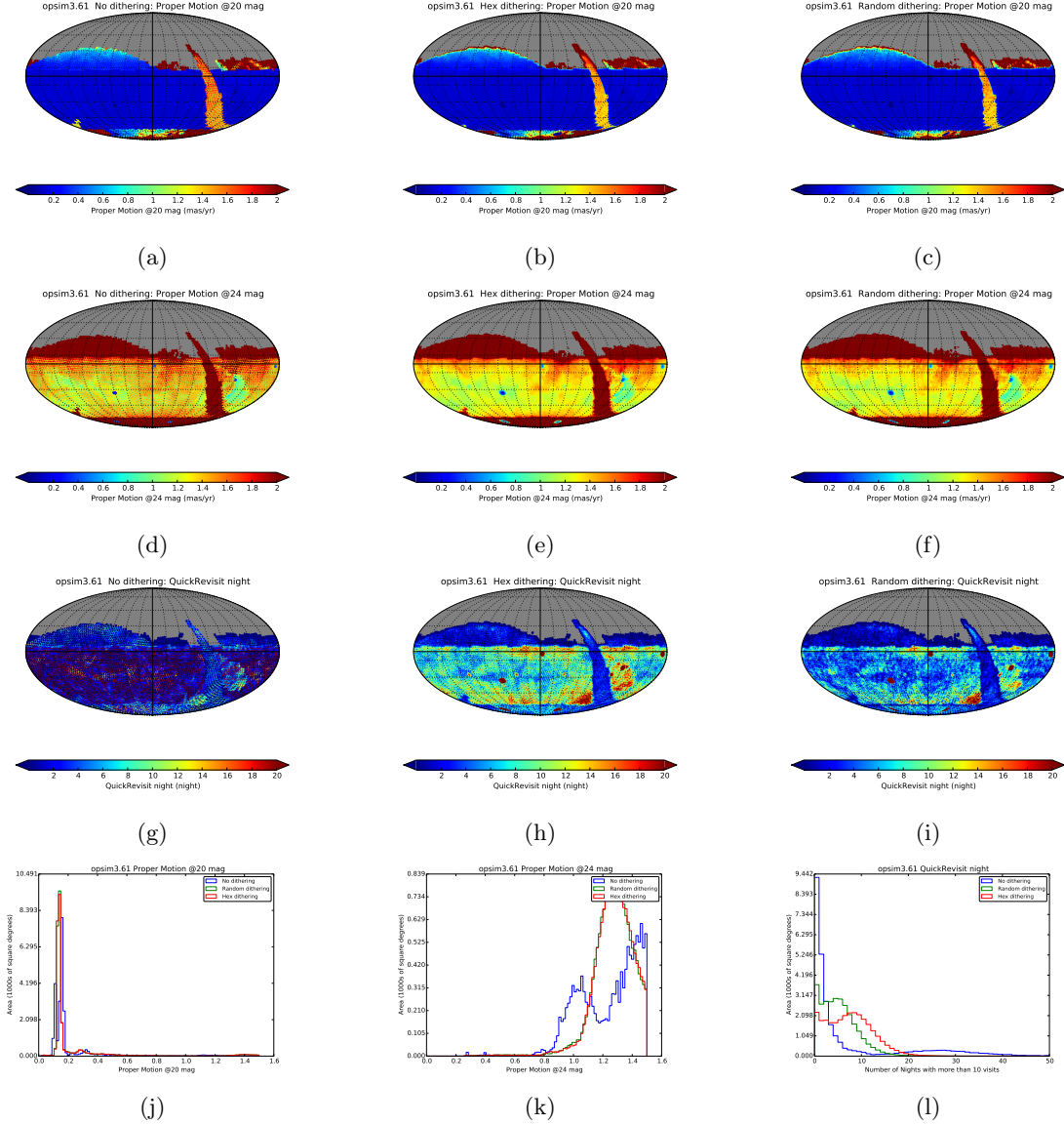


Figure 10: Analyzing the effects of dithering on proper motion measurements and the number of nights with more than 10 visits (i.e., 'QuickRevisits'). Panels 10a, 10b, and 10c show the on-sky distribution of expected errors in the measurement of proper motion for a 20th magnitude star in the case of no dithering, hex dithering and random dithering, respectively (all visits in all bands at a particular RA/Dec are used to calculate the proper motion; the **Metric** assumes there is no parallax to confuse the proper motion measurement). Panels 10d, 10e, and 10f show the same for a 24th magnitude star. By examining the skymaps and panel 10j, we can see that dithering is not very important for the proper motion measurement of high SNR stars, as generally each measurement is simply running up against the noise floor of the astrometric measurements (with the notable exception of the plane of the Milky Way, where fewer visits are obtained). However, as panel 10k shows, dithering is an important consideration for lower SNR stars, and improves the median error in the proper motion by a about a tenth of a mas/year, presumably due to the increase in the median number of visits and coadded depth. Panels 10g, 10h and 10i contain plots showing the result of the **QuickRevisitMetric**, counting the number of nights with more than 10 visits at each RA/Dec grid point. This **Metric** highlights some differences in the dither strategies, visible in panel 10l. Because the random dither strategy dithers each visit independently, it can decrease the number of revisits within a night by spreading these visits over a greater area and breaking field overlaps. The hex dither preserves relative field placement within a night, applying a constant offset for the pointings throughout an entire night.

Table 1: Summary statistics of **Metrics** applied to non-dithered, hex dithered, and randomly dithered OpSim pointings using a **HealpixSlicer** with resolution of  $27.4''$ .

MetricName	Metadata	Median	Mean	RobustRMS
Nvisits g band (#)	g No dithering	79.00	93.80	20.76
Nvisits g band (#)	g Hex dithering	98.00	92.17	31.13
Nvisits g band (#)	g Random dithering	98.00	91.68	33.36
Nvisits r band (#)	r No dithering	174.00	195.00	60.04
Nvisits r band (#)	r Hex dithering	217.00	192.72	94.89
Nvisits r band (#)	r Random dithering	217.00	190.99	103.04
Coadded m5 g band (mag)	g No dithering	27.13	26.98	0.21
Coadded m5 g band (mag)	g Hex dithering	27.24	26.99	0.28
Coadded m5 g band (mag)	g Random dithering	27.23	26.99	0.30
Coadded m5 r band (mag)	r No dithering	27.34	27.04	0.28
Coadded m5 r band (mag)	r Hex dithering	27.45	27.07	0.43
Coadded m5 r band (mag)	r Random dithering	27.45	27.06	0.49
Proper Motion @20 mag (mas yr <sup>-1</sup> )	No dithering	0.16	-	0.12
Proper Motion @20 mag (mas yr <sup>-1</sup> )	Hex dithering	0.14	-	0.11
Proper Motion @20 mag (mas yr <sup>-1</sup> )	Random dithering	0.14	-	0.11
Proper Motion @24 mag (mas yr <sup>-1</sup> )	No dithering	1.54	-	2.73
Proper Motion @24 mag (mas yr <sup>-1</sup> )	Hex dithering	1.42	-	2.23
Proper Motion @24 mag (mas yr <sup>-1</sup> )	Random dithering	1.42	-	2.23
QuickRevisit night (# nights)	No dithering	1.00	7.84	5.19
QuickRevisit night (# nights)	Hex dithering	7.00	7.70	5.19
QuickRevisit night (# nights)	Random dithering	4.00	6.35	3.71

```

class RobustRmsMetric(SimpleScalarMetric):
    """
    Use the inter-quartile range of the data to estimate the RMS.
    Robust since this calculation does not include outliers in the
    distribution.
    """
    def run(self, dataSlice, slicePoint):
        iqr = np.percentile(dataSlice[self.colname], 75) -
              np.percentile(dataSlice[self.colname], 25)
        rms = iqr/1.349 #approximation
        return rms

```

Figure 11: Example of writing a new simple **Metric**, operating on a single data column and returning a scalar value for each data slice. The class inherits from **SimpleScalarMetric** and uses this `__init__` method, but provides its own `run` method.

```

class PercentileMetric(SimpleScalarMetric):
    def __init__(self, colname, percentile=90, **kwargs):
        super(PercentileMetric, self).__init__(colname, **kwargs)
        self.percentile = percentile
    def run(self, dataSlice, slicePoint):
        return np.percentile(dataSlice[self.colname], self.percentile)

```

Figure 12: Example of writing a new simple **Metric** that includes a run-time configurable parameter (the percentile value). The class inherits from the **SimpleScalarMetric**, but extends the `__init__` method, while still providing its own `run` method.

```

class VisitGroupsMetric(BaseMetric):
    """Count the number of visits per night within deltaTmin and deltaTmax."""
    def __init__(self, timesCol='expMJD', nightsCol='night',
                  deltaTmin=15.0/60.0/24.0, deltaTmax=90.0/60.0/24.0, minNVisits=2, window=30, minNNights=3,
                  **kwargs):
        #... <snip> ... # Removed lines setting internal variables to passed values
        super(VisitGroupsMetric, self).__init__([self.times, self.nights], **kwargs)

    def run(self, dataSlice):
        """
        Return a dictionary of:
            the number of visits within a night (within delta tmin/tmax of another visit),
            and the nights with visits > minNVisits.
        Count two visits which are within tmin of each other, but which have another visit
        within tmin/tmax interval, as one and a half (instead of two).
        """
        uniquenights = np.unique(dataSlice[self.nights])
        nights = []
        visitNum = []
        #... <snip> ... # Removed lines with details of calculation
        metricval = {'visits':visitNum, 'nights':nights}
        if len(visitNum) == 0:
            return self.badval
        return metricval

    def reduceMedian(self, metricval):
        """Reduce to median number of visits per night (2 visits = 1 pair)."""
        return np.median(metricval['visits'])

    def reduceNNightsWithNVisits(self, metricval):
        """Reduce to total number of nights with more than 'minNVisits' visits."""
        condition = (metricval['visits'] >= self.minNVisits)
        return len(metricval['visits'][condition])

    def reduceNVisitsInWindow(self, metricval):
        """Reduce to max number of total visits on all nights with more than minNVisits, within any 'window'
        (default=30 nights)."""
        maxnvisits = 0
        for n in metricval['nights']:
            vw, nw = self._inWindow(metricval['visits'], metricval['nights'], n, self.window, self.minNVisits)
            maxnvisits = max((vw.sum()), maxnvisits)
        return maxnvisits

```

Figure 13: Example of a more complex Metric that returns a dictionary from the *run* method and then provides several *reduce* methods to evaluate different aspects of those calculated values. Both the *run* method and the *reduce* methods are called for each slice in the Slicer.

but then could be interpreted in multiple ways to produce scalar values at each slicePoint for visualization. First the Metric *run* is called for each data slice; then all *reduce* methods are called for each data slice (but passed the metric value calculated by the *run* method at that point).

An example is the *VisitGroupsMetric*: this Metric is intended to examine how visits are paired together as a preliminary exploration of how well an OpSim simulated survey might perform for solar system object discovery. First the Metric calculates the number of visits within a given time interval on each night, for each data slice, returning a dictionary containing the nights that multiple visits were achieved and the total number of visits on each of those nights that were within the time interval. Then different *reduce* methods operate on each metric value (corresponding to each original data slice), calculating the median number of visits, the number of times that more than a threshold number of visits occurred within some larger time interval of number of nights, the number of lunations that received more than a threshold number of nights with multiple visits, and the number of successive lunations that received more than a threshold number of nights with multiple visits. The reduce methods provide multiple views into the underlying question (how visits are paired together for discovering solar system objects) and are all desirable; however, the first step is somewhat computationally expensive. By allowing multiple reduce methods, we can take the original data slice and end up examining it in multiple ways with minimal cost. Code for the *VisitGroupsMetric* can be found online in the LSST Stash repository at <http://ls.st/rkw>, but excerpts illustrating the *run* and *reduce* methods are shown in Figure 13.

More information on writing and using your own **Metrics** is available in the MAF documentation.

## 5. CONCLUSIONS

MAF has been designed to provide an easy to use, easy to extend framework to analyze LSST OpSim simulated surveys. It is a powerful tool for evaluating the effects of observing strategies, including dithering strategies. By collaborating with the wider LSST community to create new **Metrics** covering a wide range of science cases, we hope to discover optimal strategies for the scheduling of LSST and quantify both the overall efficiency of the surveys and their scientific potential.

Beyond analyzing LSST OpSim outputs, MAF can be applied to any dataset. Much of the necessary framework requirements are available in base classes (as well as an illustration of the required API), which can be extended for use with a particular dataset. For example, if a user writes a custom **Metric** and uses that with one of MAF's **Slicers** (or writes their own **Slicer** for a specific purpose), but then wants to analyze observing histories from other telescopes instead of (or as well as) LSST OpSim data, all that is required is a new **Database** class to access the new pointing history.

We intend to continue development on MAF, in particular improving the presentation of MAF outputs using a web interface. In addition, we welcome community contributions to MAF, including new **Metrics**, **Slicers**, or **Database** classes. There are several avenues for input including direct contact with the LSST Simulations group ([lsst-imsim@lsstcorp.org](mailto:lsst-imsim@lsstcorp.org)), a series of workshops on the OpSim observing strategy, to be hosted by NOAO and LSST, starting August 2014 with the 'LSST Observing Cadences Workshop' (<http://ls.st/2xd>), and we will be hosting contributed code within the LSST Stash repository.

## APPENDIX A. URLS

This section contains the expansion of the shortened URLs in the body of this paper, along with a brief summary of the content at the URL location. All URLs are current at the time of this paper's publication.

MAF documentation is hosted at: <http://ls.st/ziz> (expands to <https://confluence.lsstcorp.org/display/SIM/MAF+documentation>).

The MAF git repository is hosted at: <http://ls.st/pxj> (expands to [https://stash.lsstcorp.org/projects/SIM/repos/sims\\_maf/](https://stash.lsstcorp.org/projects/SIM/repos/sims_maf/)).

The full example MAF driver script is available at: <http://ls.st/mxl> (expands to [https://stash.lsstcorp.org/projects/SIM/repos/sims\\_maf/browse/doc/SPIE\\_2014/testdriver2.py?at=refs%2Fheads%2Ffeature%2F0PSIM-461-spie-paper-for-maf](https://stash.lsstcorp.org/projects/SIM/repos/sims_maf/browse/doc/SPIE_2014/testdriver2.py?at=refs%2Fheads%2Ffeature%2F0PSIM-461-spie-paper-for-maf)).

The **VisitGroupsMetric** class can be browsed in the LSST Stash repository at: <http://ls.st/rkw> (expands to [https://stash.lsstcorp.org/projects/SIM/repos/sims\\_maf/browse/python/lsst/sims/maf/metrics/visitGroupsMetric.py](https://stash.lsstcorp.org/projects/SIM/repos/sims_maf/browse/python/lsst/sims/maf/metrics/visitGroupsMetric.py)).

Details about the first joint NOAO and LSST Observing Cadences Workshop are available at: <http://ls.st/2xd> (expands to <https://project.lsst.org/meetings/ocw/>).

## ACKNOWLEDGMENTS

We would like to thank Alex Kim, Seth Digel, Phil Marshall, Knut Olsen, and Michael Woods-Vasey for participating in beta testing and providing feedback on early documentation for MAF.

LSST project activities are supported in part by the National Science Foundation through Cooperative Support Agreement (CSA) Award No. AST-1227061 under Governing Cooperative Agreement 1258333 managed by the Association of Universities for Research in Astronomy (AURA), and the Department of Energy under contract with the SLAC National Accelerator Laboratory. Additional LSST funding comes from private donations, grants to universities, and in-kind support from LSSTC Institutional Members.

## REFERENCES

- [1] Delgado, F., Saha, A., Chandrasekharan, S., Cook, K., Petry, C., and Ridgway, S., “The LSST operations simulator,” **This proceedings**.
- [2] Ridgway, S., Cook, K., Miller, M., Petry, C., Chandrasekharan, S., Saha, A., Allsman, R., Axelrod, T., Claver, C., Delgado, F., Ivezić, Z., Jones, R. L., Krughoff, S., Pierfederici, F., and Pinto, P., “Simulation of autonomous observing with a ground-based telescope: the LSST experience,” in [*Society of Photo-Optical Instrumentation Engineers (SPIE) Conference Series*], *Society of Photo-Optical Instrumentation Engineers (SPIE) Conference Series* **7737** (July 2010).
- [3] Delgado, F., Cook, K., Miller, M., Allsman, R., and Pierfederici, F., “LSST operation simulator implementation,” in [*Society of Photo-Optical Instrumentation Engineers (SPIE) Conference Series*], *Society of Photo-Optical Instrumentation Engineers (SPIE) Conference Series* **6270** (July 2006).
- [4] Górski, K. M., Hivon, E., Banday, A. J., Wandelt, B. D., Hansen, F. K., Reinecke, M., and Bartelmann, M., “HEALPix: A Framework for High-Resolution Discretization and Fast Analysis of Data Distributed on the Sphere,” *ApJ* **622**, 759–771 (Apr. 2005).
- [5] “Sqlalchemy.” <http://www.sqlalchemy.org/>.
- [6] Carroll, C. M., Gawiser, E., Kurczynski, P. L., Bailey, R. A., Biswas, R., Cinabro, D., Jha, S. W., Jones, R. L., Krughoff, K. S., Sonawalla, A., Wood-Vasey, M., and LSST Dark Energy Science Collaboration, T., “Improving the LSST dithering pattern and cadence for dark energy studies,” **This proceedings**.