

SRD constraints on LSST cadence parameters

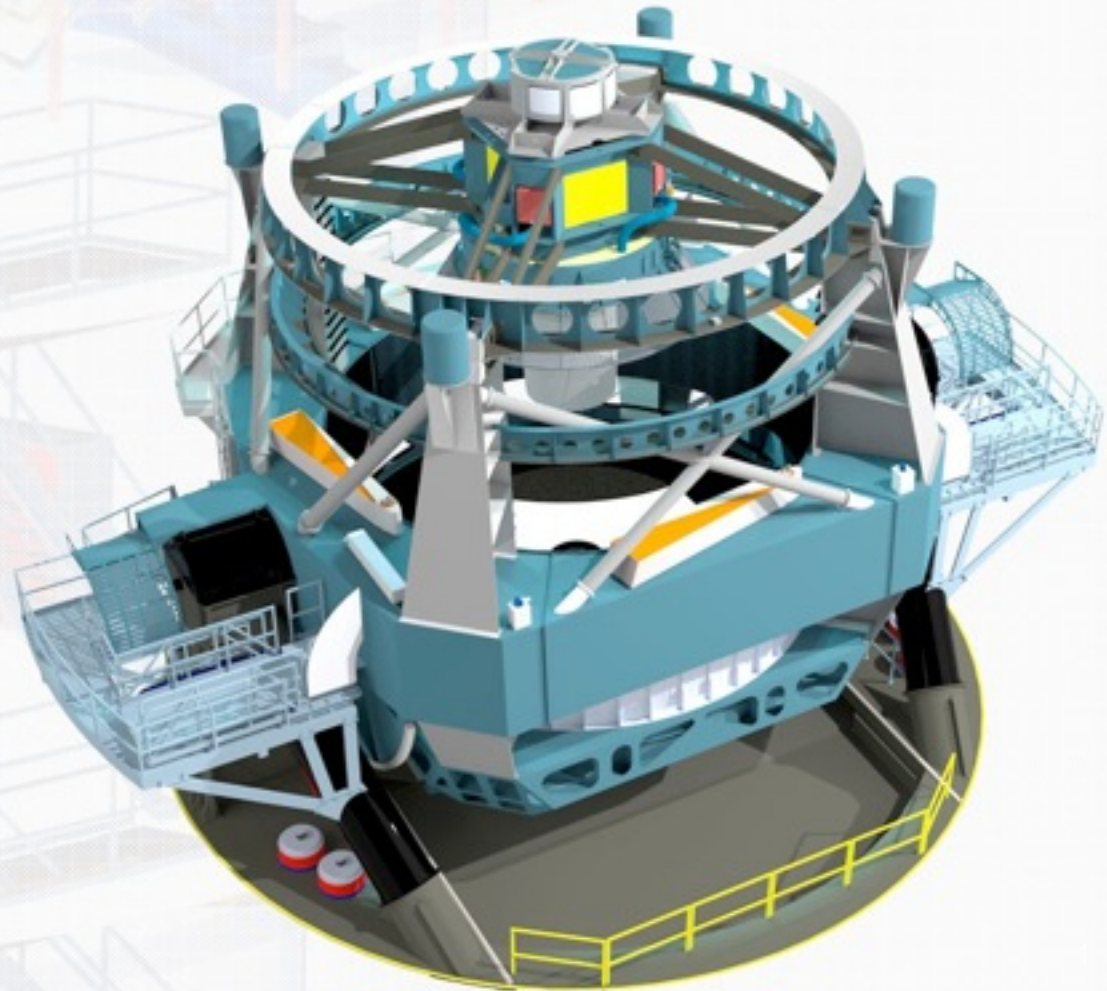
Željko Ivezić

University of Washington

LSST Project Scientist

LSST Scheduler Workshop

Tucson, March 18–19, 2015





Outline

The main goal: to review most important cadence constraints set by the Science Requirements Document, and to introduce and illustrate a few optimization goals and current “baseline cadence”

- 1) Flowdown of LSST science goals to LSST system requirements
- 2) SRD specifications for cadence
- 3) Cadence “conservation laws”
- 4) Hierarchy of survey complexity
- 5) Current baseline cadence
- 6) Progress towards survey goals
- 7) Baseline cadence optimization

1. Flowdown of Science Goals to System Requirements



System

Atmosphere

(transmission, refraction, seeing, sky background)

Telescope (collecting area, mirror reflectivity, slew and settle time, contribution to seeing, scattered light, FOV)

Camera (CCD QE curve, optical transmissions and reflections, charge diffusion, readout noise, crosstalk, filters)

Data processing (data throughput, algorithmic errors, speed, bugs)

Science

Dark matter, dark energy, cosmology (spatial distribution of galaxies, gravitational lensing, supernovae)

Time domain (cosmic explosions, variable stars)

The Solar System structure (asteroids)

The Milky Way structure (stars, ISM)

Any given science program drives numerous system parameters

1. Flowdown of Science Goals to System Requirements



System

Atmosphere

(transmission, refraction, seeing, sky background)

Telescope (collecting area, mirror reflectivity, slew and settle time, contribution to seeing, scattered light, FOV)

Camera (CCD QE curve, optical transmissions and reflections, charge diffusion, readout noise, crosstalk, filters)

Data processing (data throughput, algorithmic errors, speed, bugs)

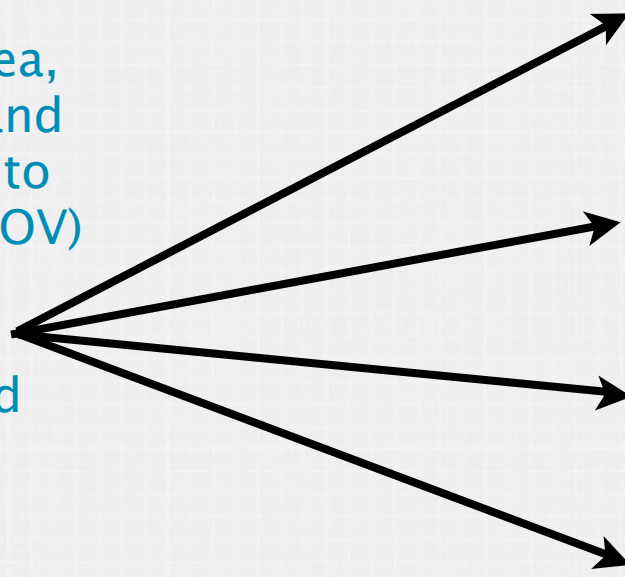
Science

Dark matter, dark energy, cosmology (spatial distribution of galaxies, gravitational lensing, supernovae)

Time domain (cosmic explosions, variable stars)

The Solar System structure (asteroids)

The Milky Way structure (stars, ISM)



Any given system parameter can have impact on numerous science programs

1. Flowdown of Science Goals to System Requirements



System

Atmosphere

(transmission, refraction, seeing, sky background)

Telescope (collecting area, mirror reflectivity, slew and settle time, contribution to seeing, scattered light, FOV)

Camera (CCD QE curve, optical transmissions and reflections, charge diffusion, readout noise, crosstalk, filters)

Data processing (data throughput, algorithmic errors, speed, bugs)

Data Properties

Image Depth

Delivered Seeing

Number of images

Distributions with respect to time, bandpass and observing conditions

Science

Dark matter, dark energy, cosmology (spatial distribution of galaxies, gravitational lensing, supernovae)

Time domain (cosmic explosions, variable stars)

The Solar System structure (asteroids)

The Milky Way structure (stars, ISM)

1. Flowdown of Science Goals to System Requirements



System

Atmosphere

(transmission, refraction, seeing, sky background)

Telescope (collecting area, mirror reflectivity, slew and settle time, contribution to seeing, scattered light, FOV)

Camera (CCD QE curve, optical transmissions and reflections, charge diffusion, readout noise, crosstalk, filters)

Data processing (data throughput, algorithmic errors, speed, bugs)

Data Properties

Image Depth

Delivered Seeing

Number of images

Distributions with respect to time, bandpass and observing conditions

Key point:

Science goals and technical parameters are connected through, and communicate via, data properties

Science

Dark matter, dark energy, cosmology (spatial distribution of galaxies, gravitational lensing, supernovae)

Time domain (cosmic explosions, variable stars)

The Solar System structure (asteroids)

The Milky Way structure (stars, ISM)

SRD specifies data properties needed to achieve science goals

2. Science Requirements Document (SRD) Specifications for Cadence



At the highest level, LSST objectives are:

- 1) Obtain about 2.5 million visits, with 189 CCDs (4k x 4k) in the focal plane; this is about *** **a billion 16 Megapixel images of the sky** ***, with characteristics as specified in the SRD (2 images/visit)
- 2) Calibrate these images (and provide other metadata), with characteristics as specified in the SRD
- 3) Produce catalogs (“model parameters”) of detected objects (37 billion), with characteristics as specified in the SRD
- 4) **Serve** images, catalogs and all other metadata, that is, **LSST data products to LSST users** and other stakeholders

The ultimate deliverable of LSST is not just the telescope, nor the camera, but the fully reduced science-ready data as well.

Science Requirements Document (SRD)

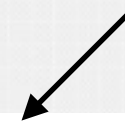
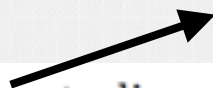


At the highest level, LSST objectives are:

1) Obtain about a billion 16 Megapixel images of the sky, with characteristics as specified in the SRD:

Section 3.4 from the SRD

Early cadence studies



As a result of these studies, the adopted baseline design (see Appendix A) assumes a nominal 10-year duration with about 90% of the observing time allocated for the main LSST survey. The same assumption was adopted here to derive the requirements described below.

Section 3.4 from the SRD “The Full Survey Specifications” is intentionally vague!

We plan to optimize the ultimate LSST cadence to reflect the state of the field at the time of system deployment (but note that it is anticipated that the deep-wide-fast aspects of the main survey will not change much).

Science Requirements Document (SRD)



At the highest level, LSST objectives are:

- 1) Obtain about a billion 16 Megapixel images of the sky, with characteristics as specified in the SRD:

Specification: The sky area uniformly covered by the main survey will include Asky square degrees (Table 22).

Quantity	Design Spec	Minimum Spec	Stretch Goal
Asky (deg ²)	18,000	15,000	20,000

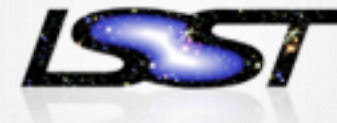
Table 22: The sky area uniformly covered by the main survey.

Specification: The sum of the median number of visits in each band, N_{v1} , across the sky area specified in Table 22, will not be smaller than N_{v1} (Table 23).

Quantity	Design Spec	Minimum Spec	Stretch Goal
N_{v1}	825	750	1000

Table 23: The sum of the median number of visits in each band across the sky area specified in Table 22.

Science Requirements Document (SRD)



At the highest level, LSST objectives are:

1) Obtain about a billion 16 Megapixel images of the sky, with characteristics as specified in the SRD:

Quantity	u	g	r	i	z	y
Nv1 (design spec.)	56 (2.2)	80 (2.4)	184 (2.8)	184 (2.8)	160 (2.8)	160 (2.8)
Idealized Depth	26.1	27.4	27.5	26.8	26.1	24.9

Table 24: An illustration of the distribution of the number of visits as a function of band-pass, obtained by detailed simulations of LSST operations that include realistic weather, seeing and sky brightness distributions, as well as allocation of about 10% of the total observing time to special programs. The median number of visits per field for all bands is 824. For convenience, the numbers in parentheses show the corresponding gain in depth (magnitudes), assuming \sqrt{N} scaling. The last row shows the total *idealized* coadded depth for the design specification median depth of a single image (assuming 5σ depths at $X = 1$ of $u = 23.9$, $g = 25.0$, $r = 24.7$, $i = 24.0$, $z = 23.3$ and $y = 22.1$, from Table 6), and the above design specification for the total number of visits. The coadded image depth losses due to airmass greater than unity are not taken into account. For a large suite of simulated main survey cadences, they are about 0.2-0.3 mag, with the median airmass in the range 1.2-1.3. **Note: 824 visits with two 15-sec exposures is 6.9 hours (~1 night/field).**

- **Photometric redshifts:** random errors smaller than 0.02, bias below 0.003, fewer than 10% $>3\sigma$ outliers
- These photo-z requirements are one of the primary drivers for the photometric depth and accuracy of the main LSST survey (and the definition of filter complement)

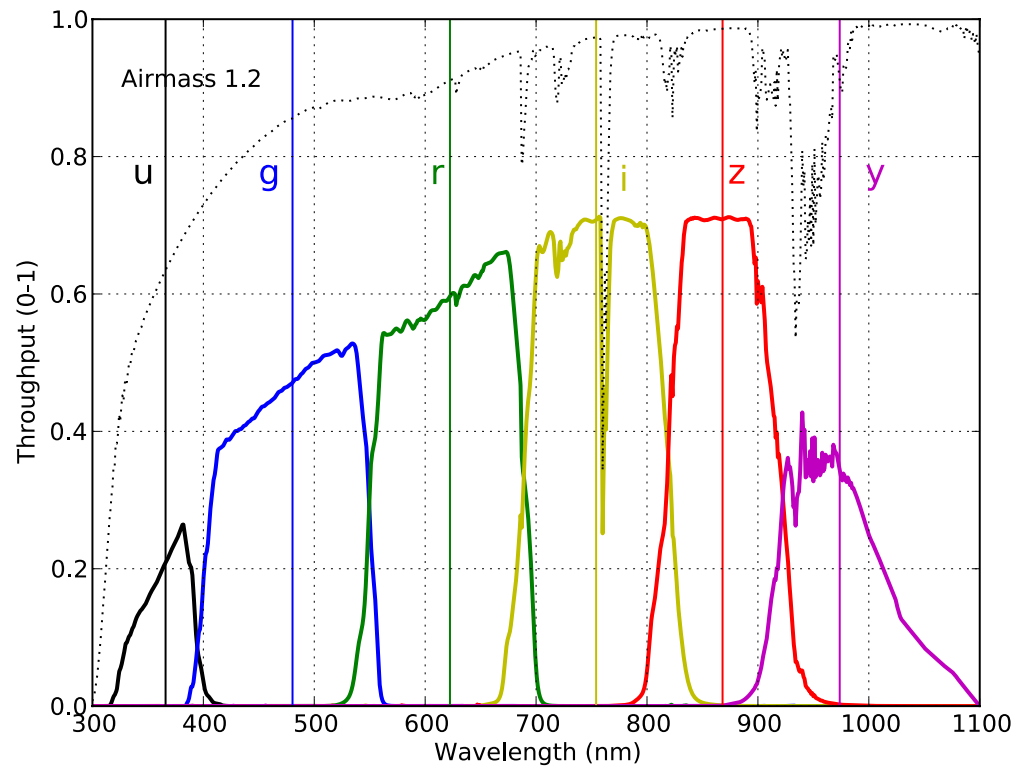


Photo-z requirements correspond to $r \sim 27.5$ with the following per band time allocations:

- u: 8%; g: 10%
- r: 22%; i: 22%
- z: 19%; y: 19%

Consistent with other science themes (stars)

Science Requirements Document (SRD)



At the highest level, LSST objectives are:

- 1) Obtain about a billion 16 Megapixel images of the sky, with characteristics as specified in the SRD:

Distribution of visits in time —————> **intentionally vague!**

Specification: At least RVA1 square degrees will have multiple observations separated by nearly uniformly sampled time scales ranging from 40 sec to 30 min (Table 25).

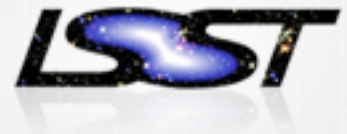
Quantity	Design Spec	Minimum Spec	Stretch Goal
RVA1 (deg ²)	2,000	1,000	3,000

Table 25: The minimum area with fast (40 sec – 30 min) revisits.

Quantity	Design Spec	Minimum Spec	Stretch Goal
SIGpara (mas)	3.0	6.0	1.5
SIGpm (mas/yr)	1.0	2.0	0.5
SIGparaRed (mas)	6.0	10.0	3.0

Table 26: The required trigonometric parallax and proper motion accuracy.

Distribution of visits vs. observing conditions



3. Cadence “conservation laws”

How can we optimize the main deployment parameters: exposure time per visit, t_{vis} , single-visit depth, m_5 , the mean revisit time, τ_{revisit} , and the number of visits, N_{vis} ?



3. Cadence “conservation laws”

How can we optimize the main deployment parameters: exposure time per visit, t_{vis} , single-visit depth, m_5 , the mean revisit time, n_{revisit} , and the number of visits, N_{vis} ?

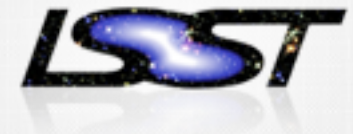
While each of these four parameters has its own drivers, they are not independent (scaled to nominal LSST):

$$m_5 = 24.7 + 1.25 * \log(t_{\text{vis}} / 30 \text{ sec})$$

$$n_{\text{revisit}} = 3 \text{ days} * (t_{\text{vis}} / 30 \text{ sec})$$

$$N_{\text{vis}} = 1000 * (30 \text{ sec} / t_{\text{vis}}) * (T / 10 \text{ years})$$

How to allocate the total observing time per position of ~7 hours to ugrizy, and how do we split allocations into individual visits?



3. Cadence “conservation laws”

How can we optimize the main deployment parameters: exposure time per visit, t_{vis} , single-visit depth, m_5 , the mean revisit time, n_{revisit} , and the number of visits, N_{vis} ?

While each of these four parameters has its own drivers, they are not independent (scaled to nominal LSST):

$$m_5 = 24.7 + 1.25 * \log(t_{\text{vis}} / 30 \text{ sec})$$

$$n_{\text{revisit}} = 3 \text{ days} * (t_{\text{vis}} / 30 \text{ sec})$$

$$N_{\text{vis}} = 1000 * (30 \text{ sec} / t_{\text{vis}}) * (T / 10 \text{ years})$$

Direct and indirect constraints on the shortest and longest acceptable exposure time per visit span a remarkably narrow range:

20 sec < t_{vis} < 40 sec for the main survey **$t_{\text{vis}} = 30 \text{ sec}$ as default**

(see section 2.2.2 in the “overview” paper, arXiv:0805.2366)

3. Cadence “conservation laws”



Constraints on exposure time per visit (20-40 sec):

Lower limit:

surveying efficiency must be high enough

(readout time, slew & settle time)

depth per visit must be deep enough

(SNe, RR Lyrae, NEOs)

Upper limit:

the mean revisit time cannot be too long

(SNe, NEOs)

the number of visits must be large enough

(light curves, systematics, proper motions)

(trailing losses for moving objects)

There is no fundamental reason why t_{vis} should be exactly the same for all visits (i.e. filters, programs, during the survey)!



3. Cadence “conservation laws”

CONCLUSION:

Direct and indirect constraints on the shortest and longest acceptable exposure time per visit span **a remarkably narrow range:**

$20 \text{ sec} < t_{\text{vis}} < 40 \text{ sec}$ for the main survey **$t_{\text{vis}} = 30 \text{ sec}$ as default**

However, there may be reasons to depart from $t_{\text{exp}} = 15 \text{ sec}$...



4. Hierarchical steps of survey complexity:

1) single band, single program, static science

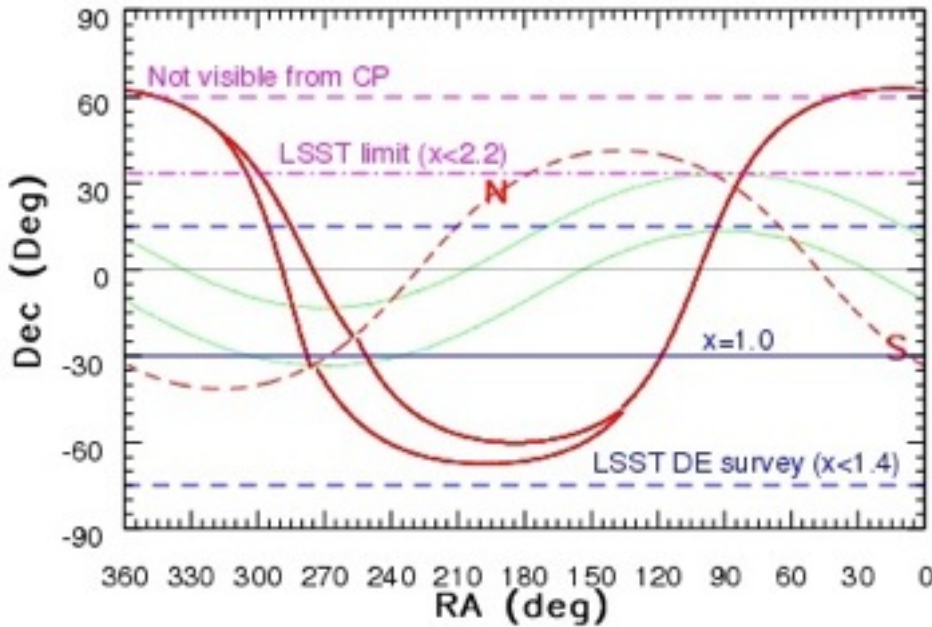
Goal: maximize the number of detected sources, e.g. galaxies.

Unless looking at unusual populations (e.g. low-redshift quasars), it is always advantageous to **first maximize the sky area and *then* depth.**

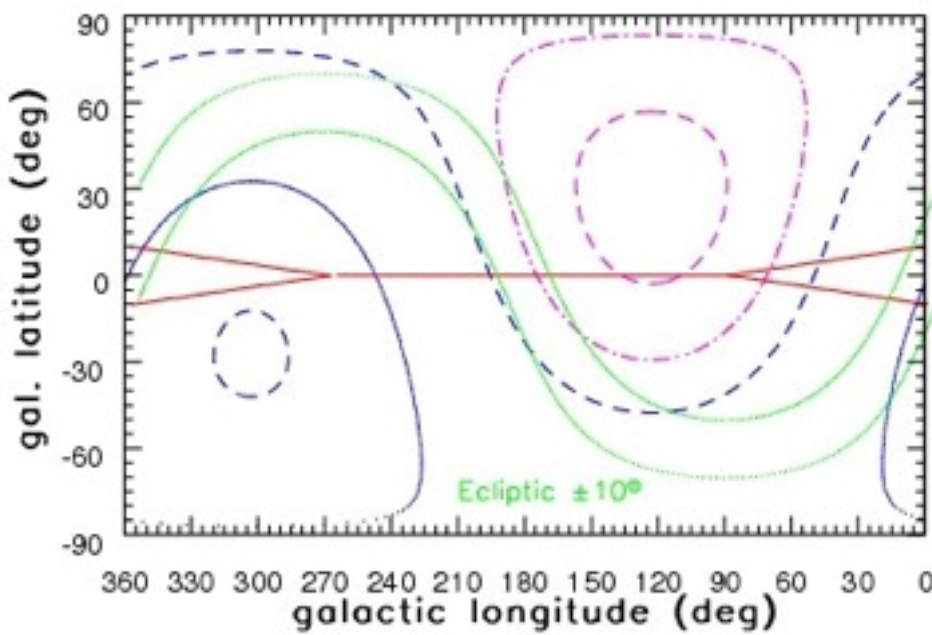
Detailed optimization takes into account airmass effects and Galactic plane: **about 18,000-20,000 sq.deg. of sky**



Sky coverage: for the main survey, maximize the number of objects (area vs. airmass tradeoff)



$X < 1.4$ corresponds to $-75^\circ < \text{Dec} < +15^\circ$ (25,262 sq. deg.)



$X = 2.2$ corresponds to $\text{Dec} < +33^\circ$, but note that the telescope can reach $\text{Dec} = +40^\circ$ ($X = 2.9$)



4. Hierarchical steps of survey complexity:

1) single band, single program, static science

2) **...but need multi-bandpass data: ugrizy**

Goal: apportion time per band so that there is no dominant bad band for photometric redshifts of galaxies (it turns out it's ok for stars too)

Galaxies:

- **Photometric redshifts:** random errors smaller than 0.02, bias below 0.003, fewer than 10% $>3\sigma$ outliers
- These photo-z requirements are one of the primary drivers for the photometric depth and accuracy of the main LSST survey (and the definition of filter complement)

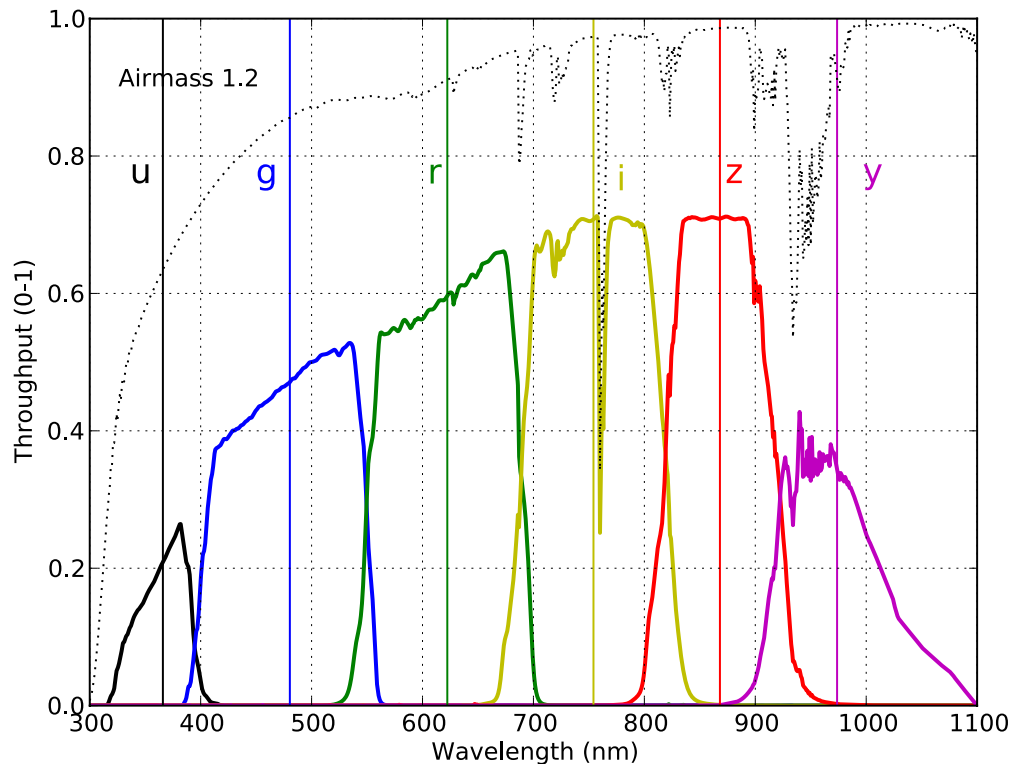


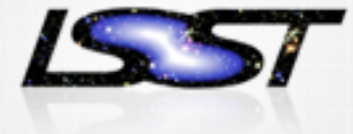
Photo-z requirements correspond to $r \sim 27.5$ with the following per band time allocations:

u: 8%; g: 10%

r: 22%; i: 22%

z: 19%; y: 19%

Consistent with other science themes (stars)



4. Hierarchical steps of survey complexity:

- 1) single band, single program, static science
- 2) need multi-bandpass data: ugrizy

3) time domain (temporal sampling function)

Asteroids: (still) believing that two visits per night, about an hour apart, are needed to “connect the dots”.

The simplest strategy: roughly uniform coverage, addresses range of time scales, from diurnal to secular changes

However: if the sampling doesn't meet the science-driven threshold, then it's better to cover a smaller active sky area more frequently (e.g. supernovae) - "rolling cadence"



4. Hierarchical steps of survey complexity:

- 1) single band, single program, static science
- 2) need multi-bandpass data: ugrizy
- 3) time domain

4) **not all sky regions were created equal!**

Galactic plane

LMC/SMC

northern Ecliptic

south Galactic pole

deep drilling (and other special) fields

It's likely that these regions will need a modified cadence, but not clear yet how exactly (depends on fast-evolving science drivers and the system performance)



4. Hierarchical steps of survey complexity:

- 1) single band, single program, static science
- 2) need multi-bandpass data: ugrizy
- 3) time domain
- 4) not all sky regions were created equal!
- 5) evolution over time
 - algorithm optimization, evolving science goals, possibly system performance changes
- 6) systematics
 - field-of-view position (rotator angle), parallax factor, dithering, etc.

5. Current Baseline Cadence

Maximize the number of objects (area vs. airmass)

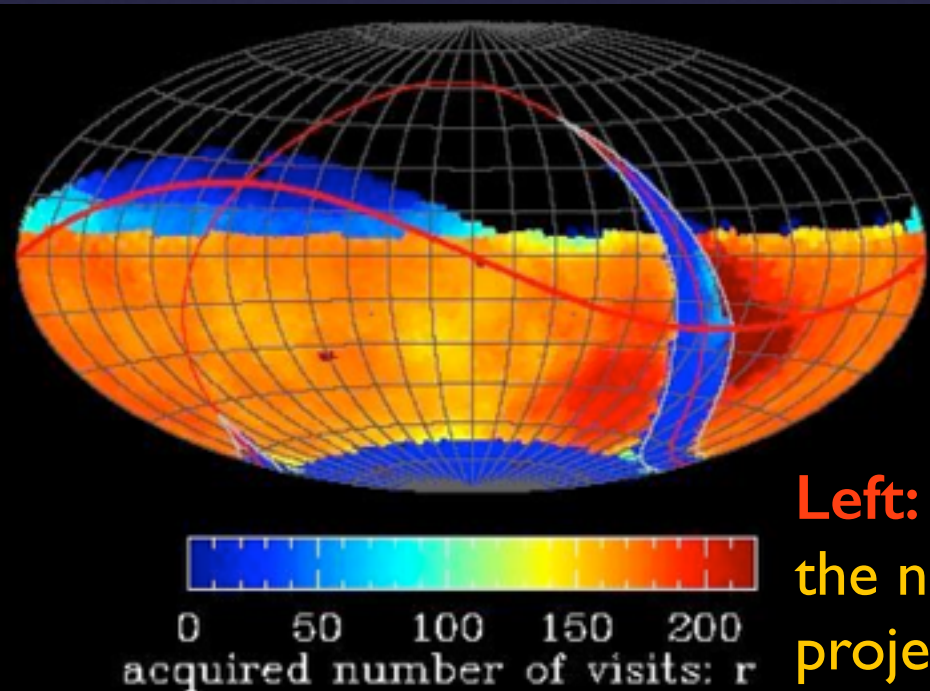
Survey Property	Performance
Main Survey Area	18000 sq. deg.
Total visits per sky patch	825
Filter set	6 filters (ugrizy) from 320 to 1050nm
Single visit	2 x 15 second exposures
Single Visit Limiting Magnitude	u = 23.9; g = 25.0; r = 24.7; i = 24.0; z = 23.3; y = 22.1
Photometric calibration	< 2% absolute, < 0.5% repeatability & colors
Median delivered image quality	~ 0.7 arcsec. FWHM
Transient processing latency	< 60 sec after last visit exposure
Data release	Full reprocessing of survey data annually

From
photo-z

Valid for
baseline
cadence:
 $t_{\text{vis}} = 30 \text{ s}$

What is LSST? A uniform sky survey.

- ~90% of time will be spent on a uniform survey: every 3-4 nights, the whole observable sky will be scanned twice per night
- after 10 years, half of the sky will be imaged about 1000 times (in 6 bandpasses, ugrizy): a digital color movie of the sky
- ~100 PB of data: about 2.5 million 3.2 Gpix images (visits), enabling measurements for 40 billion objects



LSST in one sentence:

An optical/near-IR survey of half the sky in ugrizy bands to $r \sim 27.5$ (36 nJy) based on 1000 visits over a 10-year period: **deep wide fast.**

Left: a 10-year simulation of LSST survey: the number of visits in the r band (Aitoff projection of eq. coordinates)

Baseline cadence (OpSim3.61)



A 10 year simulation: “existence proof” for an LSST survey

Basic characteristics:

- observing starts/stops at 12 degree twilight
- CTIO 4m weather log as weather model
- telescope model and scheduled downtime for maintenance
- u filter in camera ~ 6 days per lunation
- utilizes 5 science proposals:

WideFastDeep: Universal Cadence

Galactic plane: collect 30 visits in each passband

North ecliptic: Universal Cadence

South Pole: collect 30 visits in each filter

6 “deep drilling” fields for SNe (100–day sequences with visits every 5 days in grizy)

- **baseline cadence always uses $t_{\text{vis}} = 30$ seconds!**



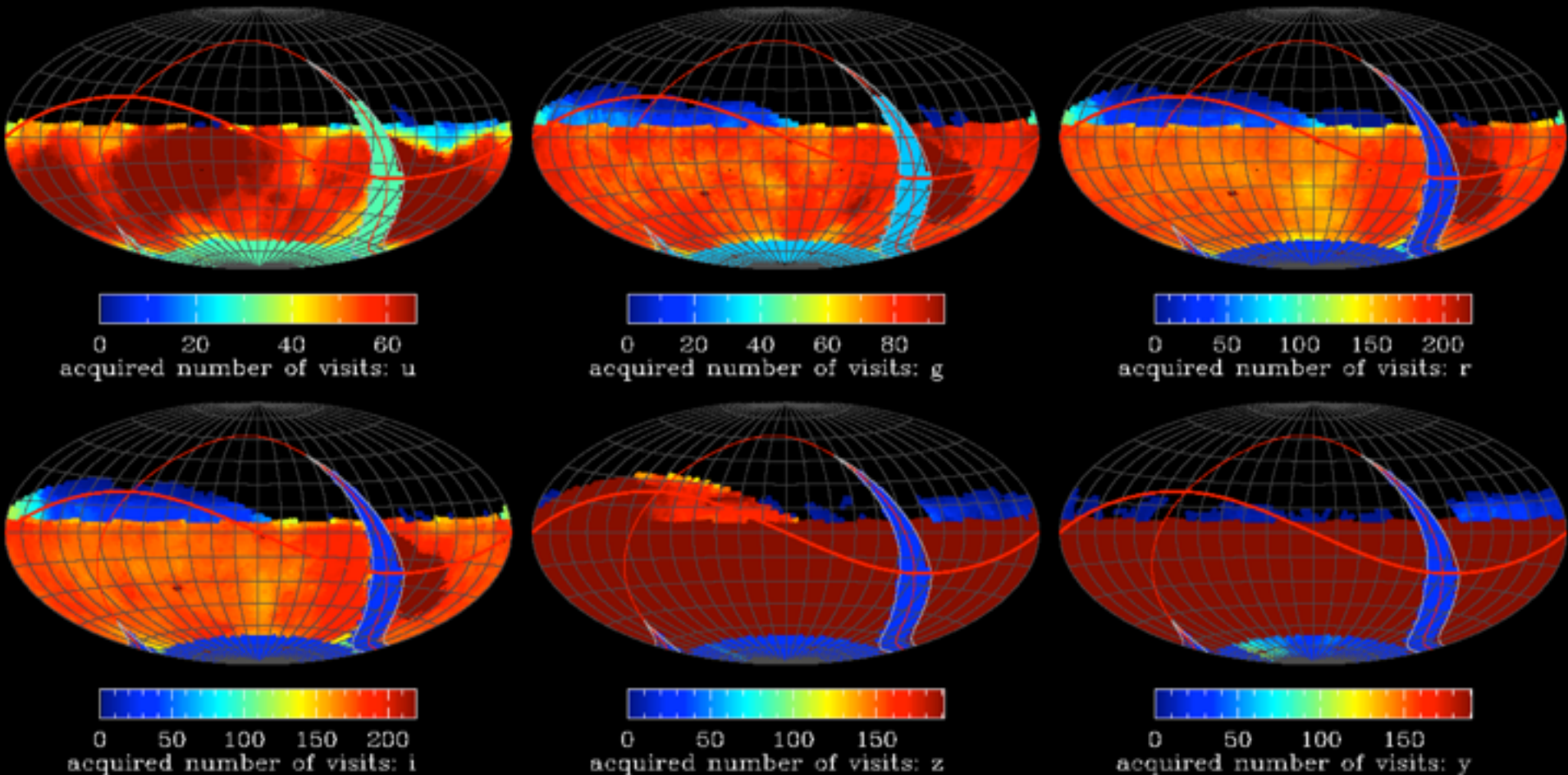


- 2,651,588 total visits,
- 20,000 square degrees: 75% in Wide-Fast-Deep (WFD)
 - 1030 requested visits in ugrizy
 - 656,687 pairs of griz with 15-60 minute separation
 - ~ 6 pairs per field per lunation
- 4,000 square degrees: 12% in the Northern Ecliptic (NES)
 - 41,774 pairs of griz with 15-60 minute separation
 - ~ 2 pair per field per lunation
- 1,900 square degrees: 7% in the Galactic Bulge/Plane (Gal)
 - 30 visits in ugrizy each
- 1,300 square degrees: 6% in the South Celestial Pole (SCP)
 - 30 visits in ugrizy each
- 23 perfect deep 100 day supernova sequences (SN), 170 incomplete for 7 fields
- Excellent period recovery for periodic variables
- Quite efficient: 6.4 second average slew (1.02 seconds due to filter change)

Baseline cadence (OpSim3.61)

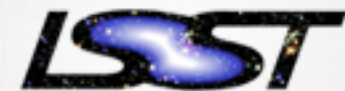


SSTAR report: http://opsimcvs.tuc.noao.edu/runs/opsim3.61/design/opsim3_61_design.html



The number of visits acquired for each field is plotted in Aitoff projection for each filter. All visits acquired by all observing modes are included in this plot.

Baseline cadence (OpSim3.61)



OpSim3.61 produced 2.65 million visits.

The minimum number of visits, with a nominal FOV fill- $f=0.86$, to satisfy the SRD (including 10% for DD) is 2.25 million.

With the current baseline cadence, we have a margin of ~18%.

(not including margins from expected depths)

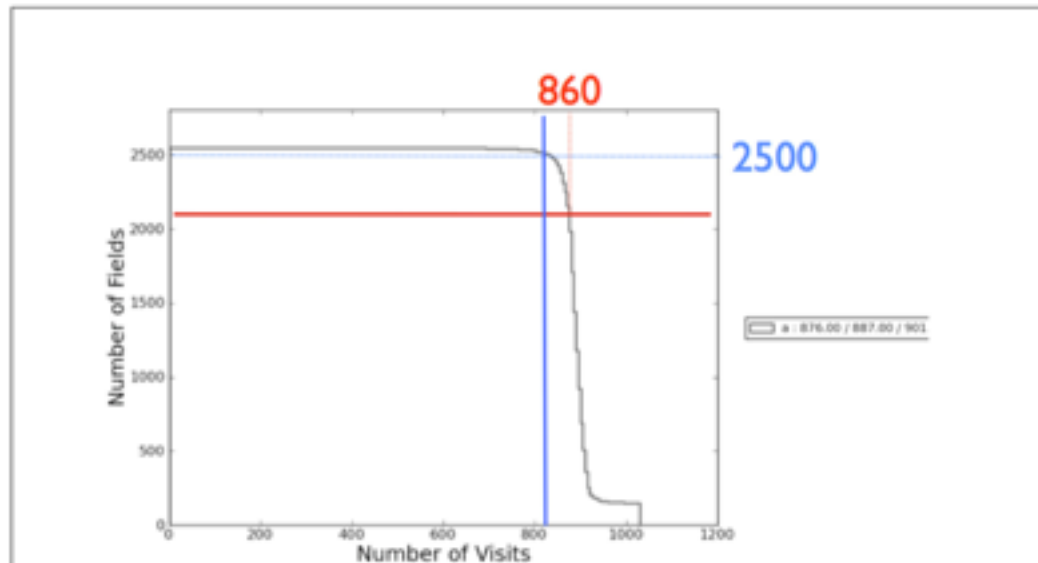


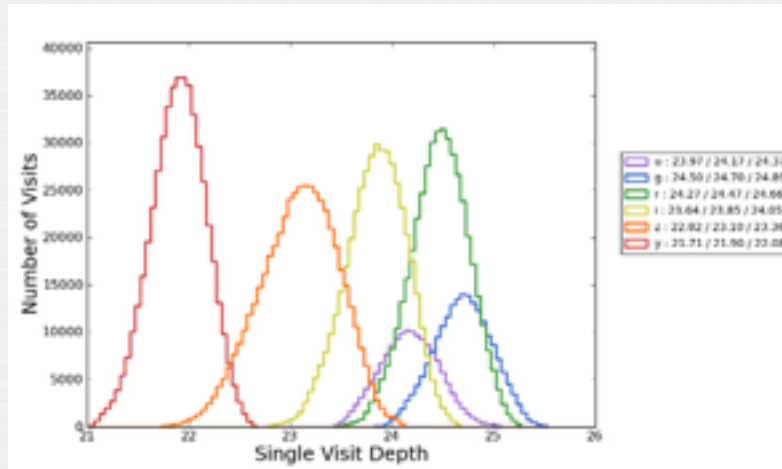
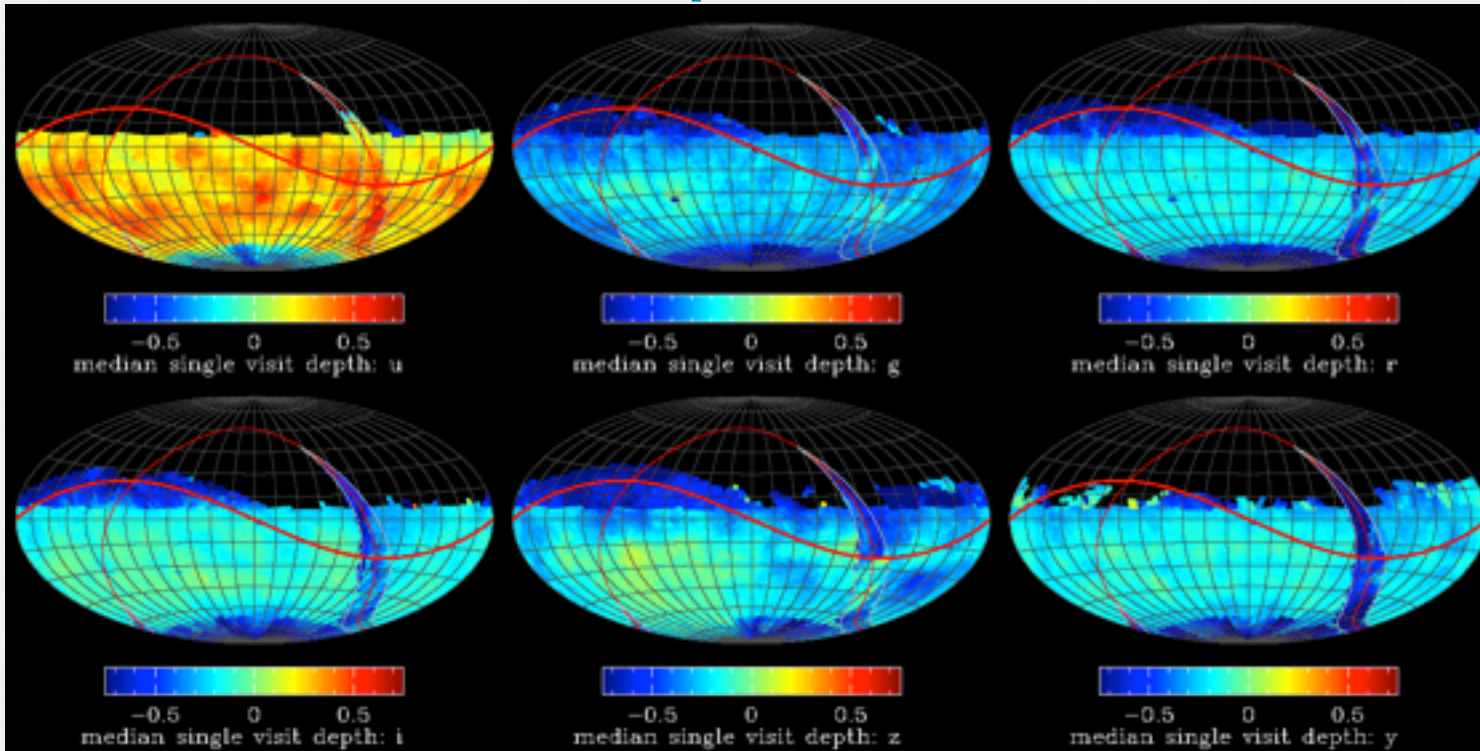
Figure 6: (opsim3.61.cvisits.allfilters.all.png) The cumulative distribution of Figure 4 showing the number of fields having visits $\geq x$. Only visits acquired by modes designed to meet the WFD number of visits are included. The inset box contains the values of the 25th, 50th (median), and 75th percentiles for each curve.

FIG. 4.— An approximate estimate of f_O using figure 6 from the opsim3.61 SSTAR report. The curve shows the number of fields on the y axis that have at least the number of visits shown on the x axis. The median number of visits for all 2549 fields considered for the main survey is 887. The red line corresponds to the SRD requirement for 2107 fields; all these fields have at least 860 visits, with a median of ~ 890 . The blue line corresponds to “at least 825 visits” (different and more stringent than the SRD requirement for the “median of 825 visits”) and is satisfied by ~ 2500 fields.

Baseline cadence (OpSim3.61)



Median
5-sigma
depth (for
all visits)



OpSim gives variation around the nominal depth due to seeing, sky brightness, and airmass variations. **The nominal value is given as input to OpSim** (best Cm estimates)

The limiting image depth (for point sources)



- The limiting image depth (ability to detect faint sources) includes a **complex interplay between system capability, system deployment, and observing conditions** (generalization of “collecting area”)
- Instead of “Collecting Area”, a full expression for **5- σ image depth**: coupling of **atmospheric**, **system**, and **deployment** parameters:

$$m_5 = C_m + 2.5 \cdot \log[0.7 / (\theta_{\text{atm}}^2 + \theta_{\text{sys}}^2)^{1/2}] + \\ + 1.25 \cdot \log(t_{\text{vis}} / 30 \text{ sec}) + 0.50(m_{\text{sky}} - 21) - k_m(X - 1)$$

- here m_{sky} is sky brightness, θ is seeing (in arcsec), X is airmass, and k_m is atmospheric extinction coefficient
- **the collecting area, the system throughput, and the system noise enter only via scaling coefficient C_m** (more details in LSE-40)
- N.B. **we can increase t_{vis} to go deeper, but then we get fewer visits.**
- given the difference between C_m and its nominal value, and all other parameters at their nominal values, then an “effective open-shutter time” metric is
$$\log(f_2) = 0.8 \cdot (m_5 - m_{5\text{nominal}})$$
- excellent high-level metric for engineering and science tradeoffs
- **caveat: C_m for the u band depends a bit on t_{vis} (readout noise)**



6. Progress towards survey goals

Main performance metrics as functions of time (t):

Co-added survey depth:

$$m_5(t) = m_5^{\text{Final}} + 1.25 * \log(t / 10 \text{ yr})$$

Photometric errors at $i=25$ (4 billion galaxy sample):

$$\sigma_{\text{ph}}(t) = 0.04 \text{ mag} * (t / 10 \text{ yr})^{(-1/2)}$$

Trigonometric parallax errors at $r=24$:

$$\sigma_{\pi}(t) = 3.0 \text{ mas} * (t / 10 \text{ yr})^{(-1/2)}$$

Proper motion errors at $r=24$:

$$\sigma_{\mu}(t) = 1.0 \text{ mas/yr} * (t / 10 \text{ yr})^{(-3/2)}$$

DETF FOM ($\text{FOM}^{\text{Final}} \sim 750$):

$$\text{FOM}(t) = \text{FOM}^{\text{Final}} * (t / 10 \text{ yr})$$

NEO (140m) completeness ($t_{\text{NEO}} \sim 4 \text{ yrs}$; $C_{\text{NEO}} \sim 93\%$):

$$C(t) = C_{\text{NEO}} * (1 - \exp[-(t / t_{\text{NEO}})^{(3/4)})]$$

And many other (e.g., the faint limit for period recovery of short-period variables, KBO and main-belt asteroid completeness)...

LSST design and performance analysis is based on sophisticated simulations but these scaling laws and resulting trade-offs offer basis for quick and robust multi-dimensional trade analysis of various “what if” scenarios.



Performance as a function of survey duration

VARIOUS SCIENCE METRICS AS FUNCTIONS OF SURVEY DURATION.

Quantity	Year 1	Y3	Y5	Y8	Year 10	Y12
r_5 coadd ^a	26.3	26.8	27.1	27.4	27.5	27.6
$\sigma(i=25)$ ^b	0.12	0.07	0.06	0.05	0.04	0.04
color vol. ^c	<u>316</u>	20	6	1.7	1	0.6
# of visits ^d	83	248	412	660	825	990
σ_π ($r=24$) ^e	9.5	5.5	4.2	3.3	3.0	2.7
σ_μ ($r=24$) ^f	<u>32</u>	6.1	2.8	1.4	1.0	0.8

Between years 1 and 10: 1.2 mag deeper, 30x better proper motions

While unprecedented science outcome will definitely be possible even with a first few years of LSST data, the complete planned and designed for science deliverables will require 10-years of data, with a tolerance of at most about 1-2 years.

7. Continuing Baseline cadence optimization



Drivers for baseline cadence modifications:

- improved knowledge of the system (now due to simulations, eventually due to performance measurements)
- changing science landscape on timescales of a few years
- unscheduled technical delays or substandard performance (e.g. broken filter, dead CCD, extra noise)
- even 10% improvement in surveying efficiency would be significant accomplishment (c.f. entire DD observing time)

7. Continuing Baseline cadence optimization



Potential optimization directions:

- minimizing the impact of read-out noise (mostly in u band)
- optimizing sky coverage (Galactic plane, south celestial pole, LMC/SMC, Ecliptic)
- **temporal sampling** (SNe, variable stars, asteroids)
- interplay between sky coverage and temporal sampling
- **deep drilling fields**
- dynamic cadence (in response to expected SNR)
- evolving cadence (in response to science drivers)



There are some “conservation laws” set by the integrated etendue.

The most important conclusion of the preliminary cadence explorations is that the upper limit on **possible efficiency improvements for baseline cadence** is not larger than 10% and probably **close to 6%**. This conclusion is by and large based on the fact that the mean slew time for (candidate) baseline cadence is 7.0 sec, and thus only slightly larger than the design specifications for the system slew and settle time of 5 sec. **But 6% of LSST is a lot!**

Nevertheless, it is likely that **the performance for time-domain science can be significantly improved** (e.g. rolling cadence for SNe survey). **Key questions:**

- 1) what exactly do we want to do?
- 2) can the current scheduler algorithms support it?