



Your Name Your Meeting Month DD-DD, YYY	
Ian Sullivan Science Pipelines group meeting March 2, 2022	

Please fill out the table above, it will automatically populate the footers and titles.



Refactoring Image Differencing

Ian Sullivan | Science Pipelines group meeting | March 2, 2022



Why refactor Image Differencing?

- The current ImageDifferenceTask is a monolithic block of code
 - This makes it hard to add tests of individual algorithmic components
- There are *many* different flavors of image differencing that are set by configs
 - Alard&Lupton vs ZOGY requires completely different code, but share the configs
 - Many different code branches required to support all combinations
 - Some configs must be set in multiple places (e.g. coaddName and getTemplate.coaddName)

New structure:

- The current ImageDifferenceTask is to be broken into three separate Tasks:
- GetTemplateTask
- AlardLuptonSubtractTask (and variants)
- DetectAndMeasureDiaSourcesTask

GetTemplateTask

- In **getTemplate.py** in **ip_diffim**
- A modified version of **GetMultiTractCoaddTemplateTask** with a new name
- Assembles coadds and warps them to match the science image
- To subtract two calexps, you must first make a single visit coadd from one of them
- produces **{coaddName}Diff_templateExp**
- **GetDcrTemplateTask**
 - Uses most of the same code
 - Takes DcrCoadds and calexp.visitInfo as inputs
 -

AlardLuptonSubtractTask

- Written from scratch, and now lives in **imageDifference.py** in **ip_diffim**
- Steps
 - Constructs a matching kernel
 - PSF-matches the template and science image
 - Subtracts the science from the template
 - Produces **{coaddName}Diff_differenceExp** and **{coaddName}Diff_matchedExp**
- Can be configured to convolve either the template or science image based on PSF size, or only convolve the template (or science) image
- **AlardLuptonPreconvolveSubtractTask** is a separate Task, but uses much of the same code
 - Produces **{coaddName}Diff_scoreExp**
- **ZogySubtractTask** (not yet written) would also produce **{coaddName}Diff_scoreExp**

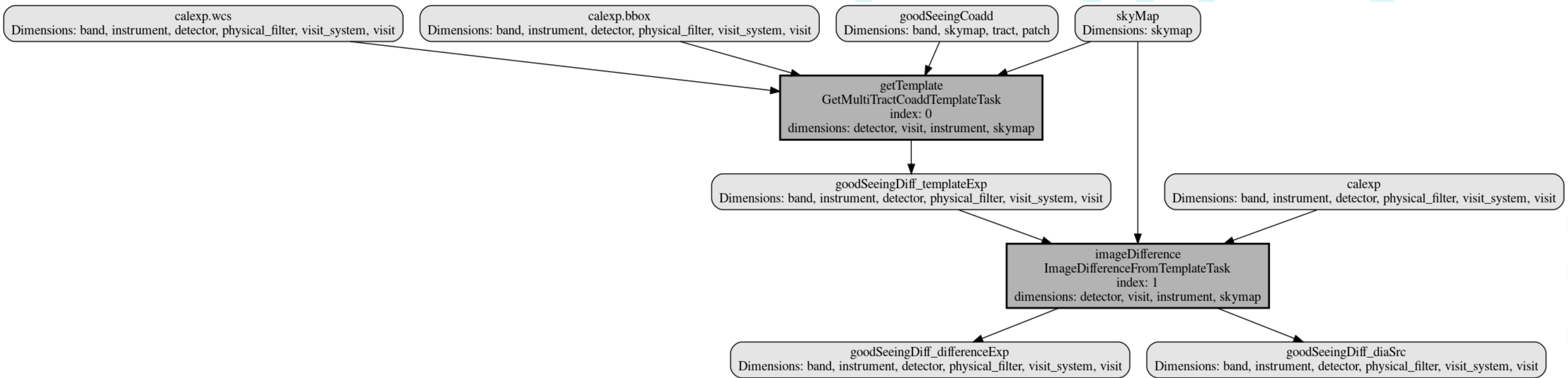
DetectAndMeasureDiaSourcesTask

- In **detectAndMeasureDiaSources.py** in **pipe_tasks**
- Preserves original functionality: forced sources, sky sources, etc..
- Produces **{coaddName}Diff_diaSrc**
- **DetectAndMeasureScoreDiaSourcesTask**
 - Separate Task that takes **{coaddName}Diff_scoreExp** as input
 - Produces **{coaddName}Diff_diaSrc**

Example PipelineTask: Before

```
1  
2 description: Test pipeline for running the old Diffim using DECam HiTS  
3  
4 instrument: lsst.obs.decim.DarkEnergyCamera  
5  
6 tasks:  
7   getTemplate:  
8     class: lsst.ip.diffim.getTemplate.GetMultiTractCoaddTemplateTask  
9     config:  
10      connections.coaddExposures: goodSeeingCoadd  
11 imageDifference:  
12   class: lsst.pipe.tasks.imageDifference.ImageDifferenceFromTemplateTask  
13   config:  
14     coaddName: goodSeeing  
15     getTemplate.coaddName: goodSeeing  
16     getTemplate.warpType: direct  
17     connections.coaddName: goodSeeing  
18     # Setting template 'coaddName' is not sufficient to satisfy contract  
19     connections.coaddExposures: goodSeeingCoadd  
20     connections.subtractedExposure: goodSeeingDiff_differenceExp  
21
```

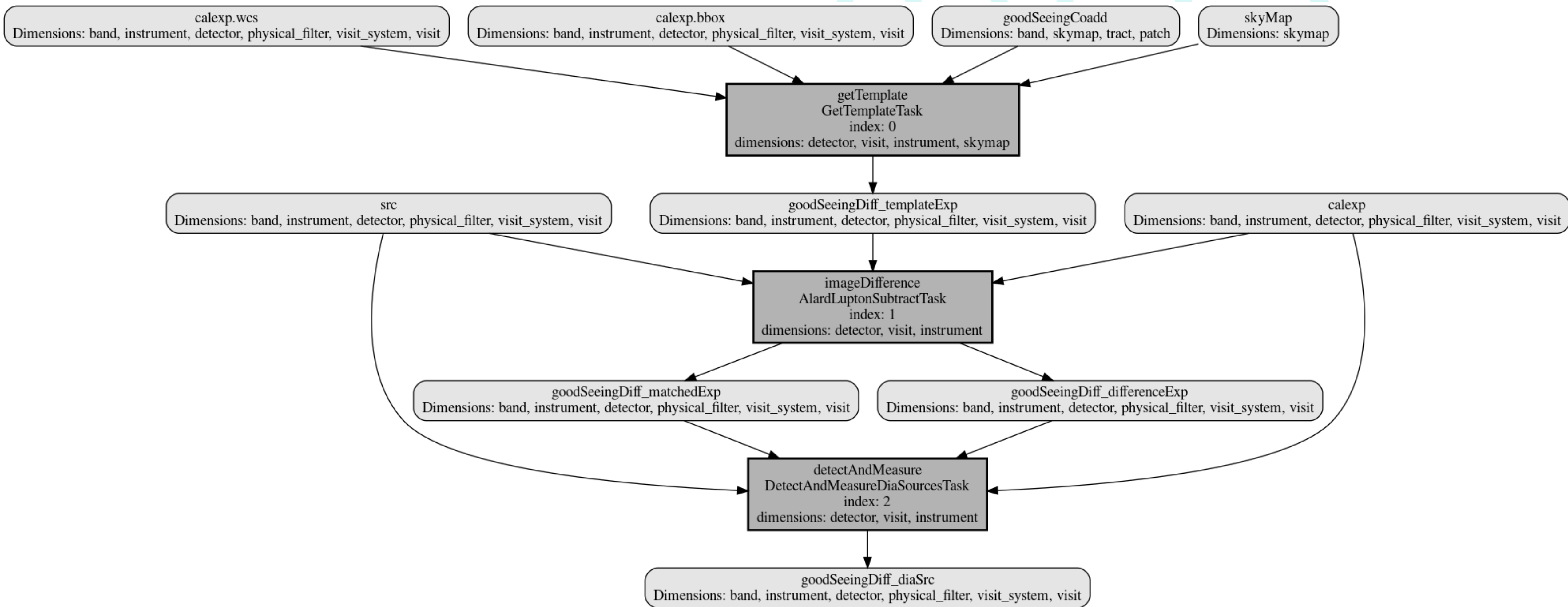

Example PipelineTask: Before



Example PipelineTask: Before

```
1
2  description: Test pipeline for running the refactored Diffim using DECam HiTS
3
4  instrument: lsst.obs.decam.DarkEnergyCamera
5
6  tasks:
7      getTemplate:
8          class: lsst.ip.diffim.getTemplate.GetTemplateTask
9          config:
10             coaddName: goodSeeing
11             warpType: direct
12      imageDifference:
13          class: lsst.ip.diffim.imageDifference.AlardLuptonSubtractTask
14          config:
15             connections.coaddName: goodSeeing
16      detectAndMeasure:
17          class: lsst.pipe.tasks.detectAndMeasureDiaSources.DetectAndMeasureDiaSourcesTask
18          config:
19             connections.coaddName: goodSeeing
20
```

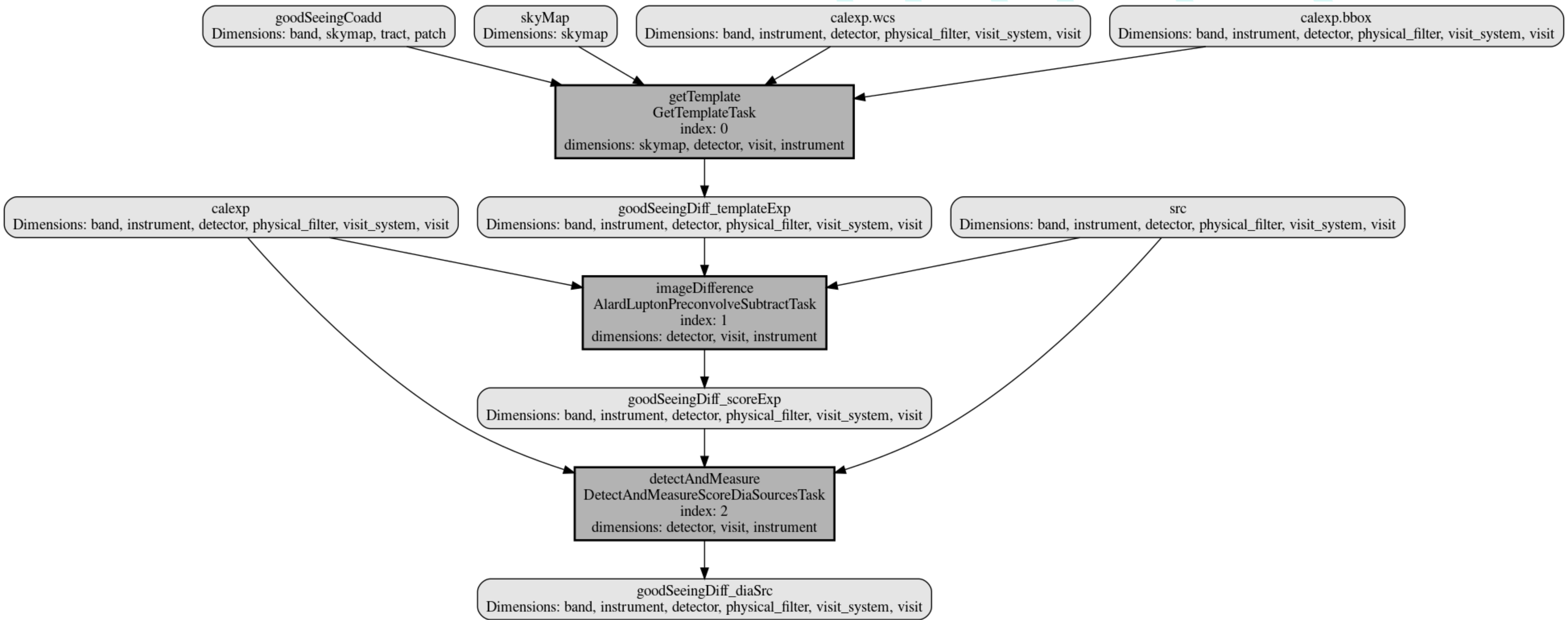
Example PipelineTask: Refactored



Example PipelineTask: Refactored

```
1
2  description: Test pipeline for running the refactored Diffim using DECam HiTS
3
4  instrument: lsst.obs.decim.DarkEnergyCamera
5
6  tasks:
7      getTemplate:
8          class: lsst.ip.diffim.getTemplate.GetTemplateTask
9          config:
10             coaddName: goodSeeing
11             warpType: direct
12      imageDifference:
13          class: lsst.ip.diffim.imageDifference.AlardLuptonPreconvolveSubtractTask
14          config:
15             connections.coaddName: goodSeeing
16      detectAndMeasure:
17          class: lsst.pipe.tasks.detectAndMeasureDiaSources.DetectAndMeasureScoreDiaSourcesTask
18          config:
19             connections.coaddName: goodSeeing
20
```


Example PipelineTask: Refactored



Example PipelineTask: Refactored

```
1
2  description: Test pipeline for running the refactored Diffim using DECam HiTS
3
4  instrument: lsst.obs.decim.DarkEnergyCamera
5
6  tasks:
7      getTemplate:
8          class: lsst.ip.diffim.getTemplate.GetDcrTemplateTask
9          config:
10             coaddName: dcr
11             warpType: direct
12             effectiveWavelength: 476.31
13             bandwidth: 147.
14      imageDifference:
15          class: lsst.ip.diffim.imageDifference.AlardLuptonSubtractTask
16          config:
17             connections.coaddName: dcr
18      detectAndMeasure:
19          class: lsst.pipe.tasks.detectAndMeasureDiaSources.DetectAndMeasureDiaSourcesTask
20          config:
21             connections.coaddName: dcr
```

Example PipelineTask: Refactored

