

MAF stuff development inspired by the workshop

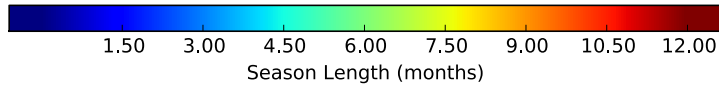
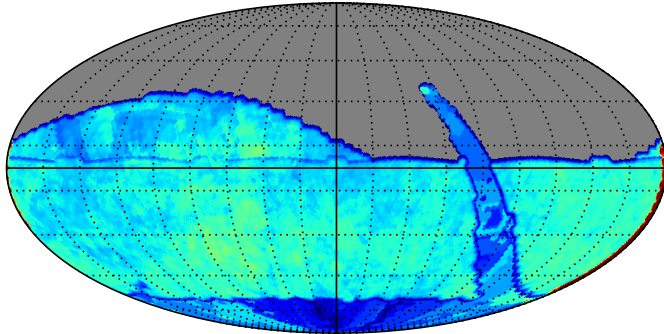
Peter Yoachim

Contributed Metric By Phil Marshall

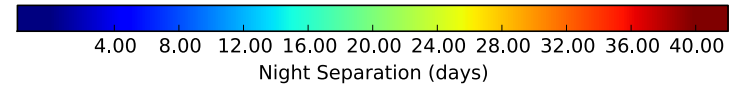
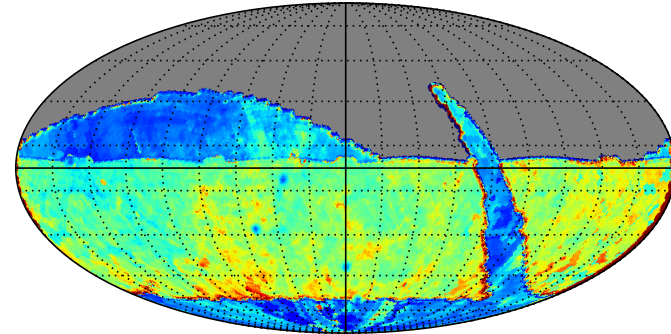
Lensed Quasar Time Delay:

Mean separation between nights, length of season, length of campaign.

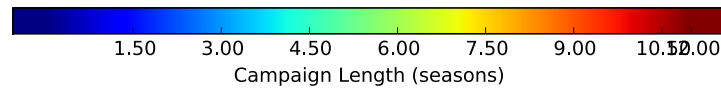
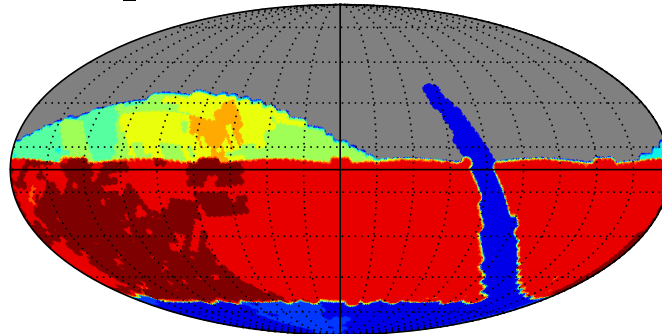
ops1_1140, dithered, i-band: Mean Season Length



ops1_1140, dithered, i-band: Mean Separation between Nights

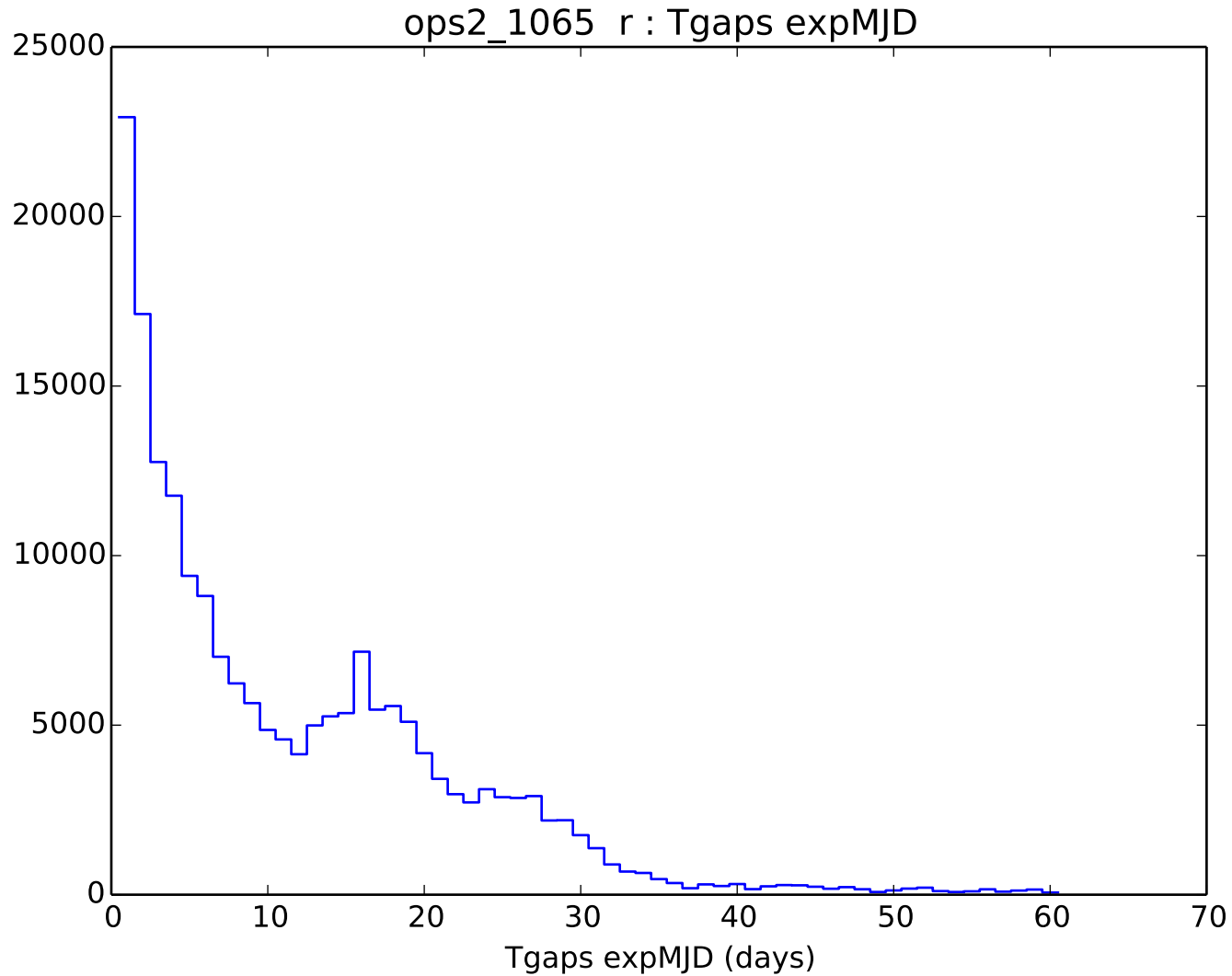


ops1_1140, dithered, i-band: Campaign Length

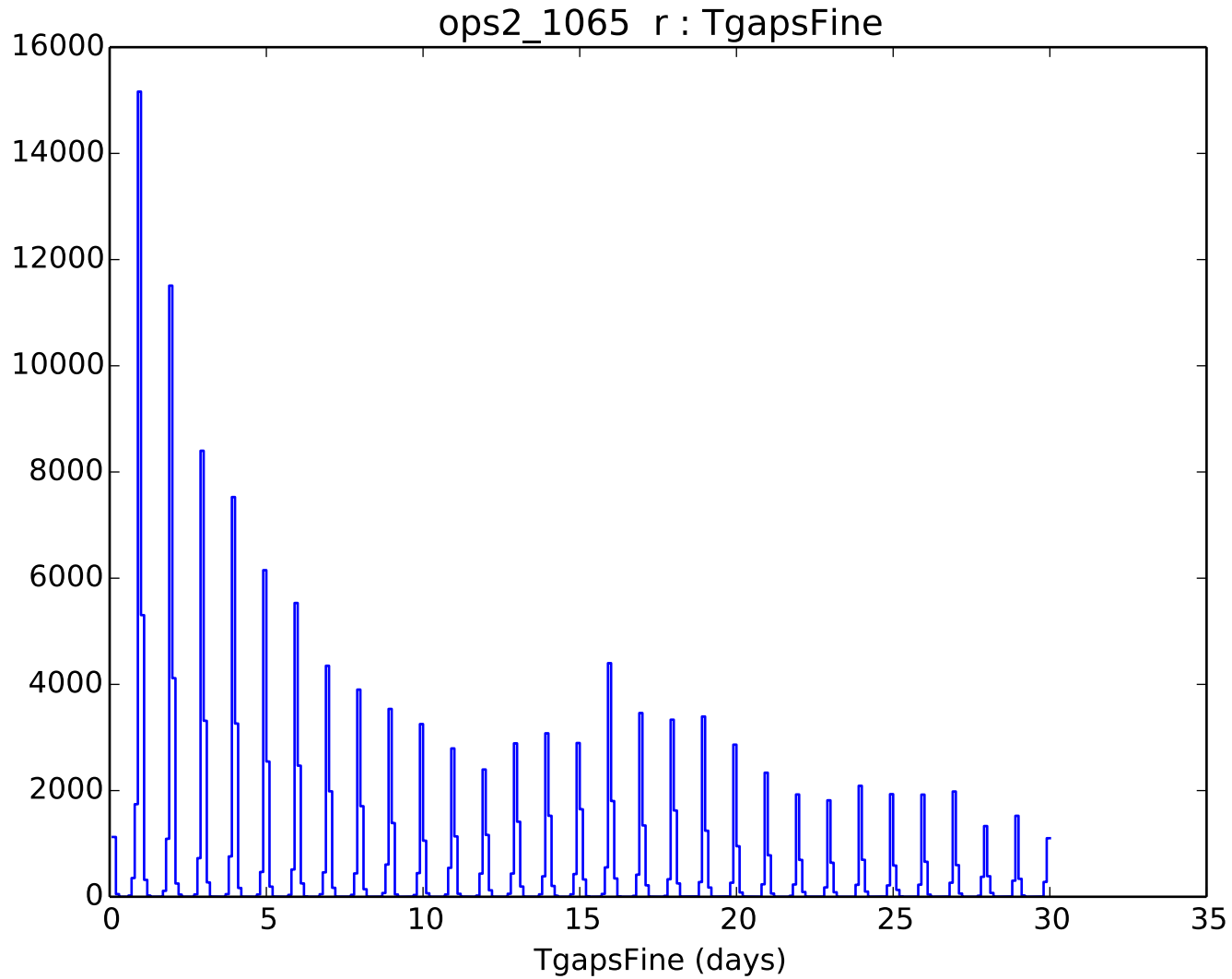


Plans to combine into single compound metric

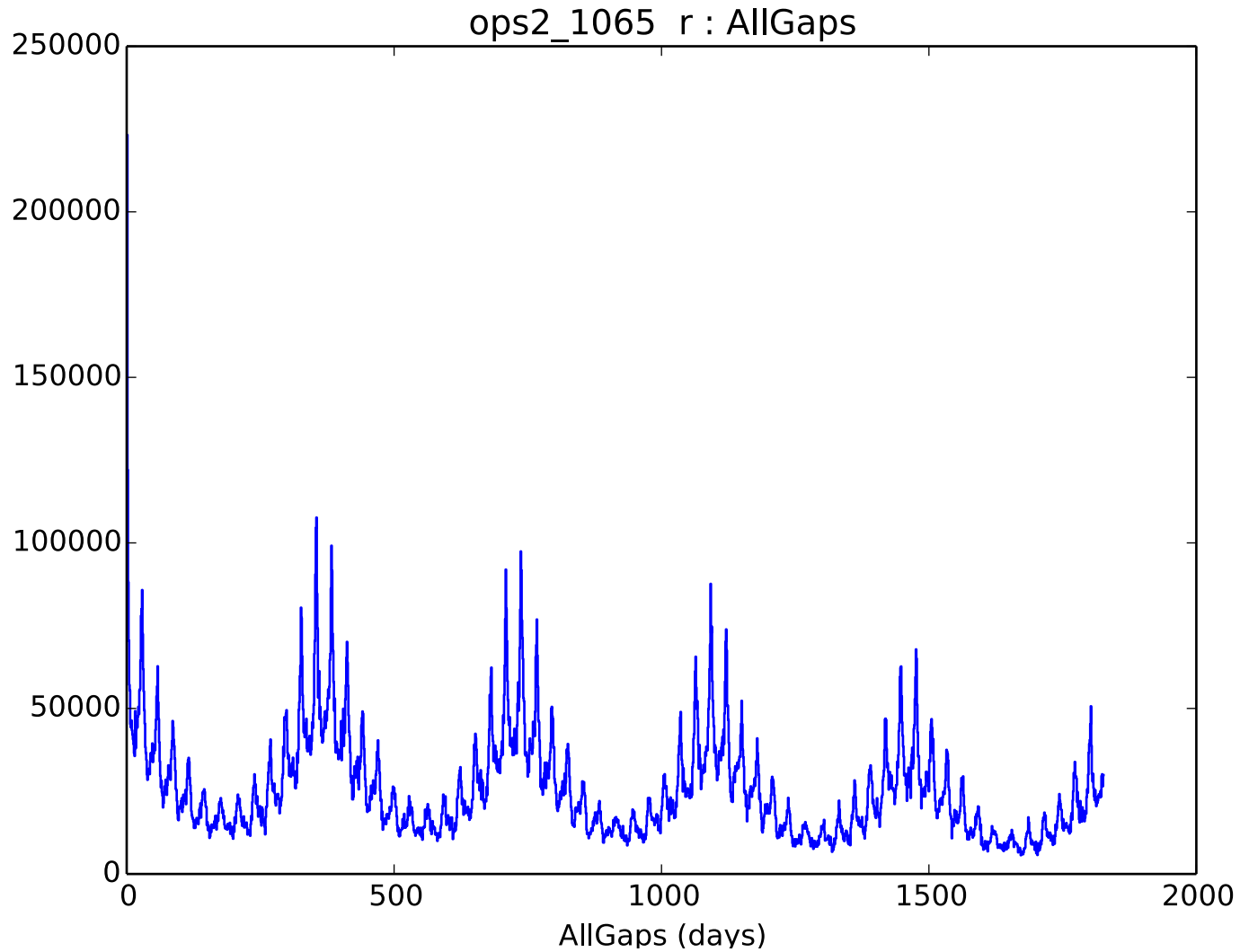
Gaps between **sequential** observations (t_2-t_1 , t_3-t_2 , t_4-t_3 , ...)
Histogram at each healpixel, then sum (or mean, median, etc)
all the histograms



Same data, but now with finer bin spacing to see day/night.



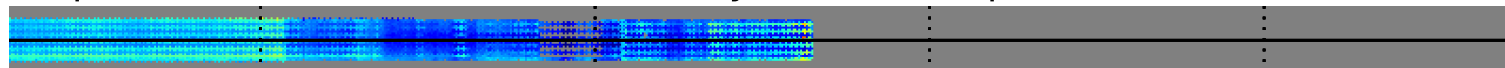
Gaps between **all** observations (t_4-t_3 , t_4-t_2 , t_4-t_1 , t_3-t_2 , t_3-t_1 , ...)
Histogram at each healpixel, then sum (or mean, median, etc) all
the histograms



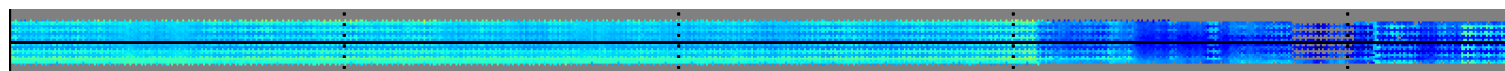
Generalizing so that any curves can be combined (e.g., FFT of observations).

Running MAF on Stripe 82 database

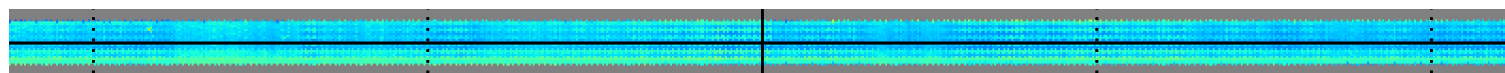
stripe82 r and nStars > 0 and nGalaxy > 0 : Mean psfWidth /n-135 < RA < -45



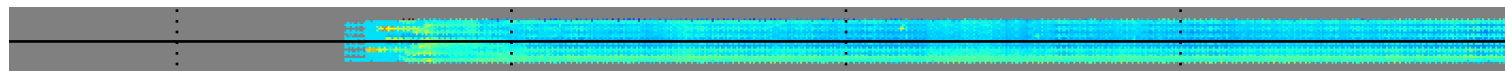
-90 < RA < 0



-45 < RA < 45



0 < RA < 90



1.2 1.4 1.6 1.8 2.0 2.2 2.4

Mean psfWidth ()